

WEATHER

Forecast	Min.	Max.	Precip.
Thursday, Sept. 7	60	80	0.00
Friday, Sept. 8	69	88	0.00
Saturday, Sept. 9	61	81	0.00
Sunday, Sept. 10	71	93	0.00
Monday, Sept. 11	69	88	0.00
Tuesday, Sept. 12	62	75	.34
Wednesday, Sept. 13	60	69	.20

ONE HUNDRED-NINTH YEAR—No. 14

12 Pages This Week

Plus 4-Page Supplement

CHELSEA, MICHIGAN, THURSDAY, SEPTEMBER 14, 1978

15c per copy

SUBSCRIPTION: \$6.00 PER YEAR

Varsity Gridders Down Tecumseh, 7-6

Chelsea varsity football team defeated Tecumseh Friday, Sept. 8, for the fourth time in the six years they have met. Final score was Chelsea 7, Tecumseh 6.

"It was a well-played opening game with the defense leading the way over the offense," Coach Phil Bareis commented.

Chelsea's only score came from the defense as Tecumseh tried to throw a pass to their tailback but Chelsea tri-captain Al Augustine picked off the pass. With a fine blocking maneuver, Augustine moved down the sideline for the touchdown.

Mike Killelea threw the key block on the touchdown run. Brad Knickerbocker then kicked the all-important extra point with just a few seconds left in the half. Chelsea led, 7-0.

Frosh Grid Team Loses 3 in Minutes

In spite of two broken bones, a torn cartilage, and a sprained knee suffered by four of his players in less than 15 minutes during their first scrimmage, Wayne Welton, head coach for the Chelsea High school freshman football team, has "high expectations for the season," he said.

While playing against Jackson County Western last Sept. 1, Welton lost three players for the season and one for the duration of the scrimmage in a series of bad breaks.

Will Rosentreter, middle guard on defense, was the first to go when, while going after the ball, he was hit from behind and his 200-pound frame went crashing to the ground breaking his leg.

Next to go was Bruce Centofanti, slot-back on offense, who was running the ball, fell hard on his hand when tackled, and fractured his wrist.

In what Welton described as a "freak accident," Tim Blough, fullback on offense, was thrown out of bounds and into Jackson's line-up. After bouncing off players and equipment he emerged with a torn cartilage in his knee.

While these three players will remain benched for the rest of the season, Todd Sprague, who sprained his knee that fateful night, will be back in the line-up as guard for Chelsea tonight at Novi when the team plays its first game.

"Our defense looks good and the offense is promising," Welton said. Chelsea scored five touchdowns to Jackson's three during the scrimmage with Ross Murphy scoring three of them on long runs from his tailback position.

Steve Grau and Gary Van Meer both played well in their quarter-back slots and over-all, Welton said, his expectations for a fine season are high.

The game tonight begins at 7 p.m. in Novi.

JV Gridders Storm Past Tecumseh, 24-14

Spurred by an early first quarter touchdown by Tecumseh, Chelsea Junior Varsity Bulldogs surged in the second quarter with two touchdowns and one in the fourth quarter to down their opponents, 24-14, in the opening game Thursday, Sept. 7.

Playing on Chelsea turf, the Bulldogs forfeited excellent field positions through their inability to move the ball in the first quarter. Tecumseh drove in for a touchdown late in the quarter but failed to earn the extra points.

Key players for Chelsea in the second quarter were Jeff Dils, quarterback, and Carl Simpson, halfback. Dils ran 16 yards to balance the score, 6-6, and Simpson ran for the extra points. On an intercept, Dils grabbed the ball for his second touchdown of the quarter and a repeat performance was scored by Simpson, giving the Bulldogs a 16-6 lead.

With 35 seconds remaining, Tecumseh scored on a pass and captured two extra points to set the scoreboard at 16-14 for half-time.

Matching skills and strategies, the two teams left the third quarter scoreless but in the final quarter, Chelsea's winning duo, Dils and Simpson, reversed roles with Simpson running 45 yards for the evening's third touchdown and Dils running in the extra points for a final score of 24-14.

Chelsea ran up a total of 372 yards led by Dils with 141; Simpson, 104; halfback John Preston, 86; fullback Bill Freeman, 36; fullback Steve Wilson, six; and halfback Ken Elliott, six.

In defensive play, Simpson hustled for 10 tackles followed by Mike Wade with eight; Bill Freeman, seven; Chris Heaton, five; Like Lazar, four; Sean Peterson, four; Mark Steinaway, four; John Preston, three; Les Hafner, two; Dils, two; Jeff Price, two; Kirk Stubbs, one; Brian Dault, one; and Craig Thams, one.

Mark Steinaway completed an interception.

(Continued on page three)

Pinckney Girl Admits Abduction Was Hoax

Roberta Thompson, the 20-year-old Pinckney woman whose disappearance nearly two weeks ago sent more than 100 volunteers and police officers scrambling through woods and swamps in search, admitted she had staged her "abduction."

After close questioning by State Police Detective Sgt. Roger Bittel of the Brighton Post, Thompson conceded that she had deliberately planted her sandals to look like she had been kidnapped. In fact, she and a girl friend drove to Marion, Ind., while others spent more than 11 days, including the Labor Day holiday, looking for her near her Cedar Lake Rd. home.

According to Thompson, she had left home, never to return, because of family problems. Problems which, Bittel said in a statement, were of a sensitive nature and because of that the investigation was closed.

The shenanigans began Sunday, Sept. 28 when Roberta failed to show up for lunch at home. Police were called by the family that afternoon and a massive search continued for the next 10 days. On Tuesday, Sept. 5, the Thompson family received a call from their daughter who was in Marion, Ind., saying that she had been forced into a car by a strange man. They had driven south to Marion when she said she convinced the man to let her out of the car. She then went to a friend's home and stayed there for three days before calling home.

Her parents drove to Marion Tuesday night and retrieved their daughter who insisted that she had been abducted. According to Marion State Police however, when they discovered Roberta after contacting relatives in the area, she told them she was in Marion of her own free will.

Roberta also said that while driving south with her "abductor" he had periodically hit her across the face which was why her eyes had a black eye. During her confession, however, she would not say how she got it.

Flag Football League Being Offered Adults

A new program, Adult Flag Football League, is being offered by the Chelsea Recreation Department this fall and a director for the program, is needed, according to Robin Raymond, director of the Recreation Department.

"We are looking for someone who can co-ordinate the program which will be held Tuesday and Thursday evenings beginning the first week in October and continuing for seven weeks," Raymond said. The salary is \$350 for the month-and-a-half long program.

Flag football is played according to the same set of rules as regular football although without tackling. Instead, players wear a flag attached to their waists and the object is to remove the flag from the ball-carrier before a touch down is made.

Equipment is furnished and registration may be done by calling 475-9830. Because adult programs through the Recreation Department must be self-supporting, a registration fee has not been set up. "The cost will depend on how many teams we get to sign up," Raymond explained.

Games will be held on the high school practice football field.

Lions Club Membership Drive Opens

With the coming of October, Chelsea Lions Club membership development campaign is sounding their first roar.

"We are looking for civic-minded men in our community who would like learning more about the activities of the Chelsea Lions Club," Tom Dmoch, membership chairman, said.

Chartered in April, 1977, the Chelsea Lions have supported numerous community activities and assisted several local citizens with their special needs. These have included the purchase of eyeglasses and hearing aids and assisting a local girl to attend a special camp for blind youngsters. They have also volunteered at Special Olympics Track and Field meets.

While most of the "work" of the club is conducted by various committees, the first and third Tuesday of each month are set aside for general meetings and dinner.

Tom Dmoch is the lion with information. Call him at 475-2831.

PREP Program Offered Parents, Pre-Schoolers

The Parent Readiness Education Project will be available for parents and their pre-schoolers again this year in the Chelsea School District.

The program entails one morning per week of classroom activities and individually assigned home activities for the remainder of the week. It is designed to make a smoother and more rewarding kindergarten year for the child in the future.

PREP teachers will be contacting parents of children born between Dec. 2, 1973 and Dec. 1, 1974. Parents who are not contacted by Sept. 13 are invited to call 475-9131, ext. 60. The screening will be held at North school on Sept. 18 and 19 at which time the PREP staff will meet individually with each child to assess the child's learning strengths and weaknesses. The child's hearing and vision will also be checked by the Washtenaw County Health Department.

This free service is offered to parents to learn more about their child's readiness for school activities. Test results will be discussed with the parents at the screening.

Firemen's Ball Scheduled Oct. 7

Live entertainment by "The Researchers" will send dancers twirling to the floor as the Chelsea Volunteer Fire Department holds their 6th annual Firemen's Ball, Saturday, Oct. 7, from 9:30 p.m. to 1:30 a.m. at the Chelsea Fairground's service center.

Proceeds from the \$10 per couple benefit will go to the University of Michigan Burn Center in Ann Arbor. Last year more than \$200 was raised. The occasion is a BYOB with food provided. Tickets may be purchased through any Chelsea fireman.



BOWLING MARATHON PROCEEDS: Presenting a check for \$460 to the St. Louis School of Exceptional Boys is Bob Dove, standing second from left, assistant manager for the Chelsea Lanes. For six week-ends, from Aug. 4 to Sept. 4, bowlers from near and far participated in the benefit which was sponsored by Chelsea Lanes, WNRS of Ann Arbor, and local chapters of the Knights of Columbus. Pictured with Dove in the back row are Larry Chonios, far left, a student at St. Louis; Dove; the Rev. Fr. Salvatore of St. Louis; Jerry Bullick, K. of C. member; and Jerry Hammerschmidt, Grand Knight of the K. of C. In the front row are St. Louis students, from left, Mike Henderson, Kenny Capozzoli, Deno Clay, and Tom Matyniak. The proceeds will be used for badly needed gym and playground equipment at the school.

Bowling Marathon Nets Nearly \$500 for St. Louis School Benefit

Nearly \$500 was raised during the recent bowling marathon held at Chelsea Lanes and presented to the St. Louis School for Exceptional Boys.

Vicki Wurster, tournament chairman at Chelsea Lanes, co-ordinated the six week-end event along with sponsors WNRS of Ann Arbor and local chapters of the Knights of Columbus.

"For our first time out, I think we did especially well," Vicki said. "We are anxious to hold another benefit next year and continue the event on an annual basis," she added.

Bowlers paid an entry fee of \$20, half of which went directly to the St. Louis school, and played 12 consecutive games. First-place winner was S. Gundry of Lansing who chalked up a total of 2,555 pins in his handicap division. John Harook of Chelsea placed second with 2,531 pins, followed by Ed Harook of Chelsea who placed third with 2,449 pins. First- and second-place winners received both a cash prize and a trophy, and the third-place winner received a cash prize.

Recreation Classes Will Keep You Trim

Chelsea Recreation Department has a list of sure-fire schemes to keep the autumn's harvest from finding its way around your waist.

No matter what shape your stomach's in, the Recreation Department has no less than four multi-purpose programs to offer this fall.

Ladies' Night Out, directed by Terry Schreiner, will be held Monday nights, beginning Sept. 25, from 8:30 to 10 in the high school gymnasium for eight weeks. In addition to regular exercise, women may take part in a number of physical games and activities. Registration fee is \$10.

Men's Night Out will also be held on Monday nights for eight weeks. Classes will run from 7 to 9 p.m. in Beach Middle school gymnasium with an open recreation format. An instructor is still needed and the registration fee is \$1 per session. Classes begin Monday, Sept. 25.

A "jogging class" for both men and women will be taught by Dale Schumann on Monday, Wednesday and Friday evenings from 7:30 to 8:15 on the high school track. "This is a low-key exercise class which will be individually suited to each runner," Schumann said. Registration fee is \$12 for the 10-week session and classes begin Monday, Sept. 25.

Also on the agenda, for the first time in Chelsea, is a Flag Football League for adults on Tuesday and Thursday evenings beginning the first week in October. Games will be held on the high school practice football field but exact time and fees have not yet been determined, according to Robin Raymond, director of the Recreation Department. Equipment is provided.

In the past years the Recreation Department has announced the schedules of all of their classes. The recent creation of the Community Education Department, however, has brought a change in this custom.

In the past few weeks, more than 6,000 brochures describing the multitude of fall and winter courses have been mailed to all of the Chelsea School District residents.

Both the Recreation Department and the Community Education Department have joined forces in bringing the public a wide-range of academic, and craft, and recreational classes.

According to Raymond, the Recreation Department has several other "purely recreational" classes to offer this fall with descriptions to be released in the near future.

To register for any of the above classes call 475-9830.

Chelsea Hosting Area Church Women United Workshop

Joy Stacey, local Church Women United president, has announced plans for the Area III fall workshop, to be held in Chelsea this year, Thursday, Sept. 28, at First Methodist church, 128 Park St. from 9 a.m. to 2:30 p.m.

Helen Hokeson of Adrian, Area III chairperson, has met several times with local women to plan an exciting day around the theme "Ministry to Children," in preparation for 1979 which has been designated by the United Nations as the International Year of the Child.

The state team, comprised of Nina Klaut, state president, and Doris Rummman, first vice-president, will begin the day with worship, followed by a presentation on human rights, with time for questions from the audience.

At noon, a lunch will be served by a committee of United Methodist Women led by Donna Gaunt. Women will have an opportunity during lunch to share dreams and accomplishments with Church Women United members from other units. A special treat will be a half-hour concert provided by "The Balladiers," a highly talented choral group from Adrian High school. They have won many awards and gone on four several times, including a recent trip through Europe.

The afternoon will be devoted to five "Share Shops," each in reference to our theme "Ministry to Children." They are:

1. Variety of approaches local units might take to the International Year of the Child. Shirley Euwer, State Communications chairperson, resource person.
2. Legislation which concerns (Continued on page four)

Council Scraps Plan To Hike Parking Fees

Reversing its decision of several months ago, Chelsea Village Council has dropped the plan to increase parking meter rates during their Sept. 5 regular meeting.

"We have found that by doubling police time patrolling the meters we have at the same time nearly doubled the parking meter fund revenue," Village administrator Fritz Weber explained.

It had been planned to drop the penny charge entirely and lessen the amount of time a nickel and dime would buy.

"Now that we have increased our revenue, it won't be necessary to increase the rates," Weber said.

In other council action, the three separate Village ordinances governing parking meters and parking lots were merged into one. In doing so, the council will be able to adjust parking meter fees without having to make an amendment to an ordinance.

Following the annual audit report for the period ending Feb. 28, 1978, by auditor R. A. Steger and treasurer Richard Barnhill, council learned that village's expected revenues were short approximately \$11,000 and an adjustment of the budget was necessary. According to Weber, the cuts will be made across the board in each of the various budget items.

In an effort to help two property owners on Old US-12 retain their land, council passed two resolutions prohibiting the sale of the land by the Department of Natural Resources.

According to Weber, "the property owners are behind in their taxes and by law the land goes to the DNR's annual land sale. By passing the resolutions we are giving the owners a little more time to come up with the tax money before they lose their land," he explained.

In a separate land related item, Council has offered to purchase from Dana Corp. the land now used as a parking lot for Veterans Park on M-52. For the past 10 years the lot has been owned by Dana but used by visitors to the park. Council also expressed interest to Dana that they would like to purchase the adjoining four acres west of Veteran's Park which would be utilized to enlarge the facility.

Following this action, Project Director Fred Barkley informed the council that he had received a complaint on the wooden ship at Veteran's Park.

"Both Barkley and I examined the ship after the council meeting and found that the deck was beginning to rot and could pose a danger to children playing on it. We have roped off the ship and put signs up asking that the ship not be used," Weber said. "It will be a month or two before any work can be done on it, but it is our feeling that the ship can be made useable again at least for another year," he added. In the meantime, parents are urged to enforce the "all-hands off ship" message of the council.

Varsity Golfers in Action With One Win

Chelsea High school golf team launched its season Tuesday, Sept. 12, and got off the pad successfully against Lincoln, 168 to 189. However, it lost a hard contested match against Brighton, 188 to 161.

These early tests have convinced the Bulldogs to become more tenacious. The team realizes it will have to reach its full potential quickly and perform at its best ability in every match because at least half the conference teams are capable of defeating each other in any match.

Chelsea has four returning letter winners. They are four-year man Charlie Bridges who will be relied upon to lead the way in every meet.

Also ready to provide strong and consistent efforts are Jeff Rabbitt and Mike Eisele, two very powerful golfers.

Filling out this unit is Bill Spaulding, a junior playing his third varsity year, and an excellent golfer and competitor.

Doug Bowen, another junior, is playing very well and will make a significant contribution in the teams' drive toward the conference championship.

There are several promising golfers among the 21 candidates who reported to fall practice this year. Juniors are Dan McGill, Bob Aldrich, Dave Wilson, Mark Barnes, Drew Sprague, and Strat Rademacher. Sophomores are Andy Ahrens, Joel Krichbaum, Randy Luick, Steve Wolak, and Mike Bohlander. Freshmen are John Welton, Geof Shaw, Phil Powers, Jim Chapman, and Herb Pearson.

New Classes Added in Community Ed. Series

Three classes offered by the Community Education Department have been filled and several additions and corrections to other classes have been announced by the director Jaclyn Rogers.

Closed to registration are Cardio-Pulmonary Resuscitation, "A Little Farming," and Welding.

New classes include Aikido, to be held Mondays from 7:30 to 9 p.m. in Beach Middle school.

Bob Goyer will instruct the 12-week program which begins Sept. 25. Registration fee is \$28 and participants must be 15-years-old or older.

Also new is an Ethnic Cooking class taught by Lenore Matloff on Monday nights from 7 to 9 in the Chelsea High school home economics room. Class limit is 15 persons and the registration fee for the six-week program is \$25. Classes begin Monday, Sept. 25.

Two changes have been made in the Cake Decorating and Adult Swimming classes. Instead of beginning on Sept. 6, the adult swimming program will start Wednesday, Sept. 20 and meet every Wednesday night from 7 to 8 in the Charles S. Cameron pool until the middle of November. Larry Reed is the instructor and swimmers must be over 18. Registration is \$12 for residents and \$18 for non-residents.

Cake Decorating has been moved from Thursday to Tuesday nights from 7 to 8. Class limit is 12 and registration is \$15 for 8 weeks of classes taught by Dorothy Hafner. Sessions are held in the Chelsea High school home economics room and begin Tuesday, Sept. 26. For information on registering call 475-9830.

The Community Education Department works in co-operation with the Chelsea Recreation Council, Washtenaw Community College, and the Washtenaw Co-operative Extension Agency.

QUOTE

"Even when we are quite alone, how often do we think with pleasure or pain of what others think of us—of their imagined approbation or disapprobation."
—Charles Robert Darwin.

Established 1871 **The Chelsea Standard** Telephone 475-1371
 Excellence Award by Michigan Press Association
 1951-1952-1960-1961-1963-1966
 Walter P. Leonard, Editor and Publisher

Published every Thursday morning at 300 North Main Street, Chelsea, Mich. 48118, and second class postage paid at Chelsea Mich., under the Act of March 3, 1879.

Subscription Rates (Payable in Advance)
 In Michigan: One Year \$6.00
 Six Months \$3.50
 Single Copies \$.20
 Outside Michigan: One Year \$8.50
 Six Months \$4.50
 Single Copies \$.25

MEMBER **NATIONAL NEWSPAPER ASSOCIATION**
 National Advertising Representative:
MICHIGAN NEWSPAPERS, INC.
 257 Michigan Ave.
 East Lansing, Mich. 48823

JUST REMINISCING

Items taken from the files of The Chelsea Standard

1 Years Ago...

Thursday, Sept. 19, 1974--

Two Chelsea police cars received flat tires last Thursday when they entered a driveway to check the IPSCO construction site on Hayes St., officers report. Early in the week, several picketers at the scene were detained by Chelsea police because they refused to allow a construction truck entry to the site.

A first-quarter touchdown and second-quarter safety, coupled with some fine Chelsea defense, led the way to the Bulldogs' victory last Friday night over Tecumseh, 9-3, in their season opener.

"Sesame Street," Chelsea High school junior class entry in the local community fair parade in Saline, won first place in the junior division and earned a prize of \$50. Cool and windy weather at Chelsea Rod and Gun Club's Sunday trap shoot this week proved just right for Gary Moore, who shot a perfect 25 out of 25 and a 24 out of 25.

14 Years Ago...

Thursday, Sept. 17, 1964--

Mr. and Mrs. Jerrold F. Beaumont have gained recognition be-

Howell Livestock Auction

Starts 1 p.m. Every Monday
 Phone 546-5400
 The Wise Owl Says Ship to Howell
 Phone 546-2470. Bim Franklin
 Market Report for Sept. 12

CATTLE
 Bull-Gd.-Choice Steers, \$51 to \$54
 Few High Choice Steers, \$54 to \$54.70
 Gd.-Choice Heifers, \$50 to \$53
 Fed Holstein Steers, \$45 to \$50
 Ut.-Std., \$44 and down.

COWS
 Heifer Cows, \$42 to \$49.50
 Ut.-Commercial, \$38 to \$42
 Canner-Cutter, \$32 to \$38
 Fat, Beef Cows, \$39 to \$41

BULLS
 Heavy Bologna, \$45 to \$52
 Light and Common, \$44 and down.

FEEDERS
 400-600 lb. Good-Choice Steers, \$50 to \$55
 600-800 lb. Good-Choice Steers, \$55 to \$60
 300-600 lb. Good-Choice Heifers, \$50 to \$55
 800-1000 lb. Holstein Steers, \$50 to \$54
 500-800 lb. Holstein Steers, \$45 to \$50
 Common and Med., \$45 and down.

CALVES
 Prime, \$70 to \$80
 Good-Choice, \$60 to \$70
 Heavy Deacons, \$50 to \$65
 Cull & Med., \$20 to \$40
 Calves going back to farms sold up to \$70

SHEEP
 Woolled Slaughter Lambs, Spring:
 Choice-Prime, \$56 to \$58
 Good-Utility, \$50 to \$56
 Slaughter Ewes, \$20 to \$24
 Feeder Lambs, All Weights, \$55 to \$60

HOGS
 210 to 240 lbs., No. 1, \$49 to \$49.80
 200-250 lbs., No. 2, \$47 to \$49
 Heavy Hogs, 250 lbs. up, \$40 to \$47
 Light Hogs, 200 lbs. down, \$30 to \$45

Sows
 Fancy Light, \$41 to \$42.50
 300-500 lbs., \$42 to \$43
 500 lbs. and up, \$43 to \$43.50

Boars and Stags
 All Weights, \$30 to \$43
Feeder Pigs
 1st Head, \$25 to \$60
 Est. 40 lb. pigs, \$42 to \$46

HAY
 1st Cutting, per bale, 35c to \$1.00
 2nd Cutting, per bale, 75c to \$1.25

STRAW
 Per Bale, 50c to 80c

COWS
 Tested Dairy Cows, \$500 to \$800
 Tested Beef Type Cows, \$350 to \$500

Skate, Skate, Skate...
Bauer Jr. Supremes \$49.95
Bauer Supremes \$115.00
 Other Bauer youth models from \$25.00
Stein & Goetz
 SPORTING GOODS
 The starting line for amateurs and pros.
 315 S. Main St.
 Ann Arbor, MI
 NOW OPEN
 W. Cross St.
 (3 blocks from the water tower)
 Ypsilanti, MI

MICHIGAN MIRROR

By Warren M. Hoyt, Secretary, Michigan Press Association

Election Camps Come Out Swinging

With the conclusion of the Republican and Democratic state conventions, it appears it will be a no-holds-barred campaign at least for the race for the U.S. Senate and the governor's office.

Very uncharacteristically, Governor William G. Milliken, who is seeking his third four-year term, closed the Republican convention taking pop shots at his Democratic opponent, Sen. William B. Fitzgerald of Detroit.

Milliken rapped Fitzgerald for not being able to lead 37 other members of the state Senate, let alone more than 9 million residents of Michigan. He was referring to the fact that members of Fitzgerald's caucus ousted him as their majority leaders halfway through a four-year term.

Fitzgerald actively challenges the Milliken administration as being fired and doing nothing worthwhile for the state of Michigan. He says he will lay the inactivity of government at the feet of Milliken and not let the governor divorce himself from government as he often has been able to do, especially during troubled times.

Incumbent Republican U.S. Senator Robert Griffin has yet to play the game of politics but he may not be able to avoid it as the campaign heats up. He went about his business at the Republican con-

vention while his Democratic opponent ripped into him and his record without mercy.

Former Detroit City Council President Carl Levin said he will be able to win the November general election simply because he is running against Griffin.

Interestingly enough, Levin quoted from the Congressional Quarterly, the official publication of Congress, where Griffin said he was resigning from the Senate as he was tired of the job, he had lost his effectiveness and Michigan deserved better representation.

Levin noted that after Griffin announced he would not seek reelection, he took a walk on the people of Michigan and missed more than 200 roll call votes. "He had the worst attendance record of a senator who did not die in office," Levin mused.

He further charged that since medical science has not learned how to transplant zest, Michigan would be represented by only half a senator as long as Griffin serves. Meanwhile, Griffin seems unphased by the charges and is quite snug going into election with his incumbency designation which offers him a decided advantage over his newcomer opponent.

With the opening of the campaign as of the close of the convention, the race for the state's top two offices has all the ear-

marks of being a campaign of naming calling, charges and countercharges.

Such a campaign does nothing for the name of politics in general and further turns off voters who are increasingly becoming disinterested.

All candidates for public office must be challenged by the voters to discuss the issues so voters may have an opportunity to compare the candidates.

With only an issue oriented campaign can voters make the best choice of the person for the job to which they were elected—serving the public as elected representatives.

Staggered Auto Registrations

Have you ever gotten caught without new license plates on the last date before they have to be sported on the vehicle? Not only is it a problem for vehicle owners, but the secretary of state's office dislikes that day just as much as auto owners.

Secretary of State Richard Austin, whose office administers the program, has called for either year-round or staggered auto registration as a method of eliminating the traditional last minute rush.

He also said changing the current registration procedure could eventually save the state \$400,000 a year.

Austin would like the staggered registration by either assigning each license plate a specific expiration date or by having the registration expire on the owner's birthday, as do driver's licenses.

Dial-A-Garden Topics Listed

Dial-A-Garden, the system of pre-recorded daily gardening tips, is sponsored by the Washtenaw County Co-operative Extension Service. The system is in operation 24 hours per day, seven days per week. Interested persons are invited to call 971-1122 at their convenience and receive timely, up-to-date gardening information.

Next week's Dial-A-Garden topics are:

Friday, Sept. 15—"Harvest and Storage of Winter Squash and Pumpkins."

Monday, Sept. 18—"Selecting Bulbs."

Tuesday, Sept. 19—"Planting Bulbs."

Wednesday, Sept. 20—"Bug Alerts."

Thursday, Sept. 21—"Fall Planting of Trees and Shrubs."

Please Notify Us of Any Change in Address

Assistance Sought for Auto Crash Victim

To help defray the medical costs of a local boy who was seriously injured in a car accident, Friday, Sept. 8, two Chelsea women have placed donation cans in a number of stores and shops asking for whatever contributions you can make.

Details are somewhat sketchy, but according to Keith Schuelke, of Grass Lake, father of David Schuelke, 22, of Chelsea, David was driving home alone on east-bound Old US-12 at about 2 a.m. Friday when he lost control of his car and hit a culvert near Lulck Dr.

"When he hit it he went right through the windshield and landed on his face. He is going to be alright but he broke the bone from the bridge of his nose to his jaw which will require corrective surgery," Keith said.

No police reports were available on the accident, but his father said that David was taken first to Chelsea Community Hospital and then to St. Joseph Mercy Hospital, Ann Arbor, where he is now.

David was just about to begin some free-lance carpentry work after working for the University of

Michigan, his father said. "I believe that David's car was insured but I don't think he had collision on the car itself," Keith said. "David lives with his mother, Marlene, in Chelsea.

More than 100,000 people annually visit Hidden Lake Gardens, Michigan State University's 670-acre landscape arboretum and outdoor laboratory in the Irish Hills near Tipton.

★ **AMISH MADE CABINETS**
 ★ **CABINETS BY CONTINENTAL**
 ★ **MERRILLAT CABINETRY**

SHOWROOM HOURS:
 Monday thru Thursday, 9 a.m. to 5 p.m.
 Friday, 9 a.m. to 7 p.m. Saturday, 9 a.m. to 2 p.m.
 Or By Appointment.

DUTCH COUNTRY KITCHENS
 PHONE 428-7292
 146 E. Main St., Manchester

NOW ON TUESDAY NIGHTS
CHICKEN BUFFET

with our Famous Deep-Fried Chicken and SPECIAL BARBECUED CHICKEN also mashed potatoes and gravy, dressing, and salad bar. Serving from 4:30-9:00

at the **CAPTAINS TABLE**
 8093 MAIN ST., DEXTER PH. 426-3811

★ **A 24-hour Hotline**
 ★ **Accurate and reliable drug information and identification**
 ★ **Extensive referral information**
 ★ **Free long term counseling**
 ★ **Drug Education presentations**
 ★ **Assertiveness, empathy and suicide prevention training**

CALL 994-HELP
 (994-HELP/994-HELP/DRUG HELP is Federally licensed for substance abuse counseling.)

Uncle Lew from Lima Says:

DEAR MISTER EDITOR:

All the high schools and colleges are back having another go at it, Mister Editor. All over the country, emotions are running high. The Mammas of the little devils are able to relax over that second cup of coffee after the bus or the car pool runs, and the college-age Mammas are wringing their hands and suffering terminal cases of the empty nest blues. Even out here in the country there seems to be more young people scooting everywhere, so I know you folks in town is having to be extra careful when you drive, not to mention when you cross the street.

Saturday night at the country store, the fellers got to discussing these tests a lot of the states are fussing about. They want to find out if teachers are teaching and students are learning, but nobody can agree on just how to go about it. In a time when fellers with master's degrees are lying about their education to get jobs pumping gas, the professional educators are debating social promotion and new names for failing to make the grade. In North Carolina, for instance, the state has decided to give somepon called "exit documents" to students that stay in school but don't learn nothing.

Meanwhile, Ed Doolittle reported, back at the college level the shysters are doing a booming business in fake degrees for everthing from welding school to law. Yale University, for example, has a list of 7,000 alumni that ain't never set foot on the campus. We have got to the place, Ed allowed, where it don't matter what we know, just

what kind of paper we got, so it ain't no wonder there's a fast market in fake papers. About the only thing the ones really in school are learning, Ed said, is the angles. He had saw where more than a third of the students who go through college with federal loans ain't bothering to pay the money back. They know it'll cost more to find them and make them pay than to forget the debt. So when they git out of school, they buy a house, two cars and a color TV and just don't have enough left to pay anything on their school loan. It ain't no wonder, Ed declared, that HEW was bragging last month that it had cut over-payments in the first half of the year to a mere \$146 million. This is money paid to people that weren't supposed to git it, Ed said, and this was \$14 million less than errors during the last six months of last year.

Speaking of HEW mistakes, Zeke Grubb had this report where this outfit backed a monkey breeding park at the University of Texas, and started the program out by sending the park 15 chimps, ever one a male. With this kind of planning, Zeke said, it ain't no wonder they're proud of that \$146 million mistake.

I see where folks on that Greek island had no problem solving their problem. There was one bus taking business from the horse and buggy operators, so the 25 horsepower taxis got together and tossed the bus in the sea. They said it polluted the air and was hazardous to the way they made their living.

Yours truly,
 Uncle Lew.

The PARTS PEDDLER
AUTO SUPPLY STORES
 (Formerly Boyer Automotive Supply, Inc.)
AUTO PARTS
 • SUPPLIES • ACCESSORIES
 ★ DOMESTIC
 ★ FOREIGN
 • BATTERIES & IGNITION PARTS
 • IGNITION TESTING, TUNE UP EQPT.
 • BRAKES • OIL FILTERS
 • SPARK PLUGS • MUFFLERS & PIPES
 • SHOCKS & FRONT END PARTS
 • STARTERS & ALTERNATORS
• CHELSEA
 108 E. MIDDLE ST.
 Next to Police Station
 PHONE: 475-1366
 OPEN DAILY 8AM-5:30PM
 SAT 8AM-4PM
• DEXTER
 8099 MAIN ST.
 Next to Dexter Bakery
 PHONE: 426-4688
 OPEN DAILY 8:30AM-5:30PM
 SAT 8:30AM-4PM
• WHITMORE LAKE
 8715 MAIN ST.
 South of the Lake—on Main St.
 PHONE: 449-4312
 OPEN DAILY 8:30AM-5:30PM
 SAT 8:30AM-4PM

Great ways to earn more money...

8.30% effective annual rate from **8.00%** per annum

At Great Lakes Federal Savings your money not only earns more money, but you have a wide choice of certificate plans to fit your savings/investment needs. For your longer term savings/investments you have a choice of 12, 30, 48, 72 and 96 month certificates with interest rates from 6.50% to a top of 8.00%. And for your short term investment...

Money Market Plus Certificates

They pay up to 1/4% more than six month Treasury Bills and up to 1/4% more than the banks where you have your checking account. The interest ceiling for Money Market Plus Certificates is determined by the weekly auction average discount rate for six month Treasury Bills. Term is just 26 weeks and they are available in amounts of \$10,000 or more. There are no fees charged, And...

Your Keogh and IRA tax deferred retirement accounts earn our big 8.00% interest rate. These two accounts let you build large reserves for retirement years and reduce your present taxes. Tax is deferred until you retire and begin making withdrawals. Withdrawals can be made as early as age 59 1/2.

(Note: Government Treasury Bill interest rates are discount rates and the effective yield is higher.)

INTEREST RATES PER ANNUM	EFFECTIVE ANNUAL YIELD
8.00%	CERTIFICATE ACCOUNT Minimum term 96 months Minimum deposit \$1000 Monthly compounding 8.30%
7.75%	CERTIFICATE ACCOUNT Minimum term 6 years Minimum deposit \$1000 Monthly compounding 8.03%
7.50%	CERTIFICATE ACCOUNT Minimum term 48 months Minimum deposit \$1000 Quarterly compounding 7.71%
6.75%	CERTIFICATE ACCOUNT Minimum term 30 months Minimum deposit \$1000 Quarterly compounding 6.92%
6.50%	CERTIFICATE ACCOUNT Minimum term 12 months Minimum deposit \$1000 Quarterly compounding 6.66%

Federal regulations require a substantial interest penalty for early withdrawals from certificate accounts.



GREAT LAKES FEDERAL SAVINGS

Formerly ANN ARBOR FEDERAL SAVINGS
 Offices in Ann Arbor, Battle Creek, Albion, Bellevue, Brighton, Chelsea, Coldwater, Dexter, Hastings, Manchester, Marshall, Richland, Saline, Ypsilanti • Member FSIC



Dr. and Mrs. Dennis G. Laurich

Quackenbush - Laurich Nuptial Vows Exchanged in Ann Arbor

Jill Ann Quackenbush became the bride of Dr. Dennis G. Laurich in St. Thomas Catholic church, Ann Arbor, on Friday, Aug. 18.

The Rev. Robert D. Lunsford performed the ceremony for the daughter of Mr. and Mrs. Gerald P. Quackenbush of Chelsea and the son of the late Mr. and Mrs. Ludwig Laurich of Dearborn Heights.

Bridesmaids were Mary K. Moon of Grand Junction, Colo.; Kate M. Quackenbush of Chelsea, sister of the bride; and Jane M. Buxton of Boyne City.

Ushers included Dr. Daniel Bowman of Waukegon, Ill.; Gerry Abbott of Dearborn Heights; and Andrew Quackenbush, brother of the bride from Chelsea. Serving as best man was Larry Laurich, brother of the bridegroom, of Dearborn Heights.

Following a reception at the Knights of Columbus Hall in Ann Arbor, the couple left for a honeymoon in Toronto. They are now residing in Northville.

TOUGH OF GLASS
A Style for Any Occasion!
1196 M-52
Phone 475-1591

Open Tues. thru Fri. 9 to 4
Saturday 9 to 2
Evening hours by appt. only
Men's & Women's Cuts & Styles
Senior Citizen Discounts every day.

CAROL'S CUTS
328 Wilkinson
Monday, Wednesday and Friday
475-7094
Appts. Only

RICARDO'S HAIR STYLING
107 N. Main, Chelsea

OPEN TUESDAY THROUGH SATURDAY
475-1671

Give something very special

A Keepsake diamond is the perfect symbol of the love you share... guaranteed perfect permanently registered protected against loss.

Keepsake
Registered Diamond Rings

WINANS JEWELRY

Wenk - Smith Vows Spoken at Rogers Corners

Wedding vows were exchanged by Jean M. Wenk and William C. Smith in an early evening ceremony, Saturday, Aug. 26 at Zion Lutheran church, Chelsea.

The Rev. John R. Morris united the daughter of Mr. and Mrs. Erwin Wenk of Chelsea and the son of Dr. William D. Smith of Ann Arbor and the late Catherine C. Smith. Larry Tweedle was the organist.

As she approached the altar, the bride wore a white polyester crepe floor-length gown with lace bodice fashioned with a lace-trimmed collar, empire waist, capelet sleeves and hem edged in lace. The bride's aunt, Mrs. Norman Wenk, hand-made the gown.

Lois Balton, friend of the bride, was maid of honor. She wore a floral-print gown of peach polyester satin and carried a bouquet of gold and white daisy mums, baby's breath, and white carnations, which had been dyed peach.

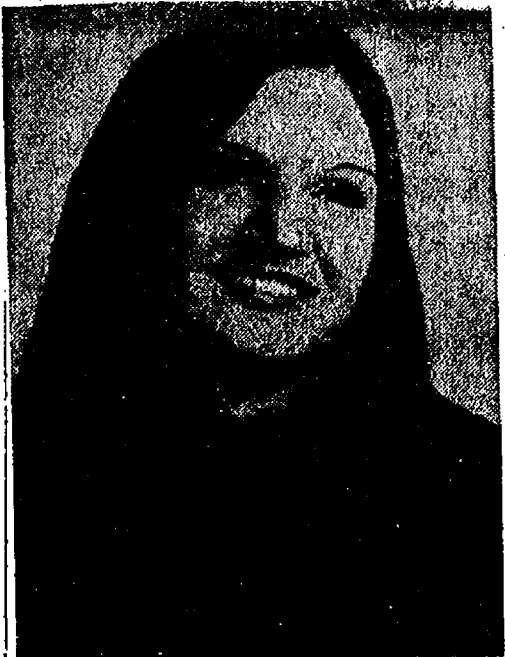
Irene Paley, sister of the bride, and Cynthia Smith, sister of the bridegroom, were bridesmaids. Their gowns were identical to the maid of honor's.

For her daughter's wedding, Mrs. Wenk chose a floor-length gown of peach polyester satin and wore a corsage of white carnations.

Best man was Jeff Winokur, friend of the bridegroom. Robert Arnold, friend of the bridegroom, and Herbert H. Hasenfratz, II, friend of the bridegroom, were ushers.

The reception was held in the UAW Local 1284 Hall on M-52. Mrs. Ernest Wenk cut the cake while Mrs. Norman Wenk served punch. Both are the bride's aunts.

The couple will reside in Florida.



Mrs. Lynn Patrick Houle

Annette K. Gaken, Lynn Houle Exchange Vows at St. Mary's

After a honeymoon trip to northern Michigan, the new Mr. and Mrs. Lynn Patrick Houle will reside in Chelsea.

The couple was united in marriage on Friday, Sept. 8 at St. Mary Catholic church. The Rev. Fr. Philip Dupuis performed the ceremony for Annette Katherine, daughter of Mr. and Mrs. James Gaken, 310 Piece St., and the son of Mr. and Mrs. Robert Houle, 315 Taylor Lane.

Sister Patricia Weigand, accompanied by Dwight Bolanowski, on the organ, sang "You Light Up My Life" and "Receive It in Your Heart," before nearly 250 guests.

The bride chose a floor-length gown of organza fitted with a lace bodice and empire waist. Her veil was a fingertip-length mantilla decorated with lace appliques. She carried a bouquet of daisies and baby's breath and her mother's rosary.

Linda Gaken of Chelsea, sister of the bride, was maid of honor. She wore a nile green chiffon gown with tiered skirt, scoop neckline, lace-edged ruffle, and long sleeves. She carried a bouquet of green and white daisies and baby's breath and wore daisies in her hair.

Sally A. Gaken of Chelsea, sister of the bride, and Gail E. Gilbreath of Chelsea, friend of the bride, were bridesmaids. They wore gowns identical to the maid of honor's.

The bride's mother wore a floor-length beige gown of polyester with spaghetti straps and matching shawl. She wore a corsage of green daisies and baby's breath.

The bridegroom's mother wore a lavender floor-length gown of polyester and a corsage of daisies.

Best man was Kevin Houle of Chelsea, brother of the bridegroom. Ushers included Anthony Houle of Chelsea and Dan Houle of Lansing, both brothers of the bridegroom.

A reception was held in the Chrysler Union Hall on M-52 given by the bride's parents. Yvonne and Cynthia Gaken, sisters of the bride, attended the guest book. Mary Kay Perry, sister of the bride, and Mary Lou Gaken and Judy Gaken, sisters-in-law of the bride, assisted in cutting the cake and pouring punch.

250 guests attended the reception where the band "The Researchers," played. The bride's father is a member of the band.

The bride is a 1977 graduate of Chelsea High school and is employed by the Chelsea State Bank. The bridegroom is a 1972 CHS graduate. He served four years in the U. S. Navy where he was stationed at San Diego, Calif., and

VFW Auxiliary Hosts Visiting 6th District President

Ladies Auxiliary Veterans of Foreign Wars No. 4078 held their regular monthly meeting Monday, Sept. 11, with 12 members and two guests present.

Lucile Smith, 6th district president of Erie, was present as an inspecting officer, and was accompanied by the 6th district patriotic instructor, Thelma Cousins, also of Erie.

Viola Packard was elected to membership and will be initiated at the October meeting. Bessie Sharp, auxiliary president, gave a report of the National Convention she attended in Dallas, Tex., Aug. 20-25.

The following members attended a school of instruction at Auxiliary No. 823, Jackson, Wednesday, Sept. 6: Marlen Johnson, Lucy Platt, Mary Kniss, Mary Erskine, Gertrude O'Dell, Bessie Sharp, Eulahlee Packard, and Dorothy Lentz. Americanism chairman, Eulahlee Packard, reported three flags are to be presented Sept. 28 at North school to Scout troops. She also reported the American flag was stolen from the front of the VFW hall. They are unsure if it was vandalism or if someone really wanted a flag.

Lucy Platt reported on the dinner to be held Saturday, Oct. 7, honoring all past commanders and past presidents of the 6th district.

Geraldine Klink was elected to the office of Auxiliary junior vice-president, filling a vacancy created by a resignation, and was immediately installed by the 6th district president, Lucile Smith.

The following members are planning to attend the Pow-Wow in Bay City Sept. 29 through Oct. 1: Eulahlee Packard, Mary Kniss, Lucy Platt and Bessie Sharp. Several Auxiliary members will be attending the 6th district meeting Sunday, Sept. 17, at Hamburg, Auxiliary No. 224, hostess.

The group voted to pay Auxiliary dues to the department in the amount of \$163.40. The National home chairman, Elizabeth Smith, reported the home has secured a \$17,000 tractor through donations of stamps, coupons and bottle caps, and is still collecting items in hopes of securing a second tractor for use on the grounds, thanks to all contributions. The next Auxiliary meeting will be Oct. 9.

Child Study Club First Fall Meeting Held Tuesday

Chelsea Child Study Club met Tuesday, Sept. 12 for a picnic at the home of Carol Kuzon. Following the meal a business meeting was called to order by president Anne Steinaway.

Neta Mills, as program chairman, announced the program for the entire year, all based on the theme "On Being A Woman."

Ann Schaffner presented the schedule for workshops to be held this fall in preparation for the Christmas Bazaar. Members were reminded that the bazaar will be Dec. 2 at the Sylvan Town Hall from 9 a.m. to 1 p.m. with proceeds going to the Waterloo Interpretive Center.

The next meeting of Child Study Club will be Sept. 26, 8 p.m. at the home of Ann Schaffner. Roberta Cobb, a registered nurse, will be speaking on the topic "Take Good Care of Yourself." Guests are welcome at this meeting.

A small child who is not usually awakened by a loud sound may be suffering from a hearing loss, warns hearing specialists. Such children should be given a complete hearing test, the specialists add.



Mr. and Mrs. Gregory Guenther

Catherine O'Neill, G. Guenther Speak Vows at St. Mary Church

St. Mary Catholic church was the setting Saturday, Sept. 2, for the afternoon wedding of Catherine O'Neill and Gregory Guenther. The Rev. Fr. D. P. Dupuis performed the ceremony for the daughter of Mr. and Mrs. Joseph O'Neill, 19555 Bush Rd., and the son of Mr. and Mrs. Roy Guenther, 19947 Old US-12.

Mrs. Gary Montange sang "Evergreen" and "You Light Up My Life," for the occasion.

The bride wore a white floor-length gown with an overlay of crown lace. Her bouquet was made of satin daisies and roses, and babies breath. Pearls circled her neck.

Michele Ball of Dexter was maid of honor. She wore an apricot floral-print gown and carried a basket of artificial flowers. She wore a flowered head piece. Bridesmaids were Kelly O'Neill of Chelsea, sister of the bride, and Cheryl Lowery of Chelsea, friend of the bride. They wore floral-print gowns with flowered head pieces and carried baskets of artificial flowers.

The bride's mother wore a nile green halter dress while the bridegroom's mother wore a white floral-print gown.

Flowergirl was Kim McDaniels, cousin of the bridegroom, and Kenna Cremen, cousin of the bride, was ringbearer.

Best man was Bob Rosentreter and ushers included Keith O'Neill, brother of the bride, and Todd Guenther, brother of the bridegroom.

A reception was held in the new Chrysler Union Hall for approximately 250 guests. Mrs. Eric Hanson baked both the bridal and bridegroom cakes. Linda Gaken and Barb and Diane Roy attended to the gifts and guest book.

For their honeymoon, the newlyweds spent a week-end in Ann Arbor.

The bride is a 1977 graduate of Chelsea High school and the bridegroom graduated from there in 1976. He is employed with Classic Containers, Co., Dexter.

Please Notify Us of Any Change in Address

HERBAL BAR SOAPS

Homemade - Mild - Long-lasting

RIVENDELL NATURAL FOODS

Monday through Saturday, 9 a.m. to 5 p.m.
3212 Alpine, Dexter Ph. 426-2549
(Across from the Farmers' Market)

OFFICIAL NOTICE

REGULAR MEETING OF THE DEXTER TOWNSHIP BOARD

will be held

Tuesday, September 19, 1978 - 7:30 p.m.

at the Dexter Township Hall, 6880 Dexter-Pinckney Rd.

WILLIAM EISENBEISER
Dexter Township Clerk

"CEE" BRITAIN

For your needs in
Cut Stone and BRICK

Rt. 1, Jackson (517) 563-2532

REGENCY TRAVEL

The Friendly Tour Store on the Corner

WORLD WIDE VACATION TRAVEL

AIRLINE - AMTRAK - CRUISES - CHARTERS

We Welcome Corporate & Commercial Accounts

ALL MAJOR CREDIT CARDS HONORED

601 E. WILLIAM ST.

ANN ARBOR, MICH. 48104
Corner Maynard & William

CALL

665-6122

NO
SERVICE
CHARGE

BOOK YOUR XMAS TRAVEL EARLY

equipment
operators!



Here's a man's boot every step of the way! Rugged, handsome, ready for a rough day's work anytime. Easy on the feet, too. Stop by - try on Pecos by Red Wing and be convinced!

RED WING
VOGEL'S
& FOSTER'S

Ph. 475-1606 Chelsea, Mich.

AUCTION SALE

SATURDAY, SEPT. 16

Beginning at 11 a.m.

North Lake United Methodist Church

14111 North Territorial Rd.

5 miles west of Portage Lake Rd. 6 miles north of Chelsea.

(RAIN DATE: Saturday, Sept. 23)

Davenport and chair.	Storage cabinets.
8-ft. davenport.	Rakes.
Bicycles.	Hoos.
Kitchen table and chairs.	Set steel belted tires, low profile.
Dishes.	Bed on wheels.
Lawn seeder.	Mattresses.
Hand tools.	Electric oven.
Stereo.	Antique Hummel dolls.
Pictures.	Records.
Appliances.	Books.
Complete double sink and cabinet.	Antique wardrobe and mirror.
	2 ice boxes.
	Electric stove.
	Wheelbarrow.

TERMS: Cash Lunch on the grounds
Not responsible for accidents on grounds day of sale.

NORTH LAKE UNITED METHODIST CHURCH

St. Jacob Ev. Lutheran Church To Observe 125th Anniversary

On Sunday, Sept. 17, members of St. Jacob Evangelical Lutheran church will celebrate the 125th anniversary of their House of Worship. The speaker for this occasion will be the Rev. Dr. John

Lawrenz, who recently became the president of Michigan Lutheran Seminary, located in Saginaw. The service is at 10:15 a.m. St. Jacob Congregation was organized in 1853 by the Rev. J.

Schmid, the pioneer missionary in this area of Michigan. The first house of worship was a log house in the hamlet of Trist. A few years later a church was erected at the corner of Trist and Moeckel Rds.

In 1853 the congregation moved to its present location on Rietmiller Rd. This is the original building used to this day. However, through the years there have been repairs and in 1950 there was extensive remodeling done. A basement was put under the building, and an addition was added to house the kitchen, rest rooms and an office.

St. Jacob Congregation is a member of the Wisconsin Evangelical Lutheran Synod. As far as can be ascertained, St. Jacob's house of worship is the oldest church building in the Synod which is still being used.

Following the anniversary service, a pot-luck dinner will be served at noon in the church basement. St. Jacob and its Pastor Andrew Bloom invites and welcomes all visitors, friends and former members to join with them in their celebration.

BOWLING

Chelsea Suburban

Standings as of Sept. 6

Dancer's	1	1
Chelsea State Bank	2	2
Dairy Queen	3	3
Dana Dee-Lites	4	4
Ricardo's	5	5
State Farm	6	6
Chelsea Assoc. Builders	7	7
Awards & Specialties	8	8
Chelsea Pharmacy	9	9
Mark IV Lounge	10	10
Frisinger Realty	11	11
Log Cabin Restaurant	12	12

150 games and over: S. Bowen, 198, 175, 160; D. McAllister, 184, 157, 155; N. Prater, 191, 169; B. Murphy, 185, 162, 150; M. Vassas, 176, 166; B. Kunzelman, 161, 155, 175; G. Desmither, 152, 187; M. Usher, 162, 160; S. Nicola, 152, 170; D. Keezer, 162, 158; J. Buku, 170, 160; N. Collins, 172; P. Harrook, 164, 159; M. DeLaToore, 151, 152, 153; D. Richmond, 179; C. Miller, 152; C. Stoffer, 171; P. Loycks, 155; C. Peterson, 165; E. Miller, 151; P. Sober, 177; E. Figg, 169; N. Packard, 161, 159; D. Keezer, 165, 157; T. Monroe, 160; B. Roberson, 169; E. Yocum, 159; E. Harmon, 161; A. Mocking, 160; A. Rohne, 159.

450 series and over: Shirley Bowen, 539; B. Murphy, 497; D. McAllister, 496; N. Prater, 487; M. Vassas, 492; B. Kunzelman, 481; G. Desmither, 476; M. Usher, 470; S. Nicola, 468; D. Keezer, 467; J. Buku, 465; N. Collins, 462; P. Harrook, 458; M. De La Toore, 456.

Sustained exposure to sounds above the 85 decibel (dB) level can cause permanent hearing losses and exposure of even a short duration to sounds between 100 and 123 dB can cause temporary deafness, warn hearing specialists.



DANA RETIREES: Earl Marriott, front row right, and Elwood "Mac" McGlothen, center, retired Thursday, Aug. 31 from Dana Corp., taking with them 53 years of combined service to the Chelsea division. Earl Marriott retired from the tool room as a journeyman lathe operator after 27 years. Mac McGlothen retired as a truck driver after 28 years. Both were presented with blue blazers from

Dana and desk-size Bibles from their local union. Standing in the front row with Earl and Mac is Ken Rock, plant superintendent. In the back row, from left to right, are Duane Schiller, chief facilities engineer; Von Fletcher, Mac's foreman; Bob Dawson, Earl's foreman; Bob Moorehead, union chairman; Whitey Andrews, plant manager; and Al Feldman, personnel manager.

Church Women United To Host District Workshop

(Continued from page one)

children. Helen West, Ann Arbor League of Women Voters, resource person.

3. Child abuse. Sarah Gibb of Ypsilanti, social worker with Catholic Social Services.

4. Positive Parenting. Sister Gail Singel of Saline.

5. Education (tutoring, literacy, health care, day care) Nan Sparrow, Ann Arbor.

Each woman will be able to choose the Share Shop she is most interested in, when she pre-registers.

Beautiful craft items hand-made by refugees around the world will be displayed for sale by early Christmas shoppers. This project, called SERRV, is sponsored by Church World Service to enable people trapped in refugee camps to make a living. The entire cost of each item is returned to the man or woman who made it with Church World Service bearing the transportation costs.

Cost of the luncheon and registration is \$1.75. Participants should call Sherry Kruger, 475-2589 to pre-

register. Child care will be provided, but mothers are instructed to bring a sack lunch for each child.

CATS

CHELSEA AREA

TRANSPORTATION SYSTEM

Transportation for the Senior Citizens, 65 years and Older, and the Handicapped.

Advance reservations are required. For morning transportation call the preceding afternoon between 1 p.m. and 3 p.m. For afternoon transportation call in the morning from 9 a.m. to 11 a.m.

CALL 475-9494

between 9 to 11 a.m. or 1 to 3 p.m.

Service hours are 9 a.m. to 4:30 p.m. daily; Thurs., 9 to 1

Canning Center Schedule

Washtenaw County Cooperative Extension Service offers free participation workshops for area families to learn the correct and safe way to home can foods. Participants are required to bring their own jars, lids, and produce and use the Center's canning equipment.

Sept. 19—"Waterbath Canning of Green Beans."
Sept. 20—"Waterbath Canning of Tomatoes."
Sept. 21—"Waterbath Canning of Applesauce and Pears."

The first state to pass a pension bill was Arizona in 1914, but the law was ruled unconstitutional, according to the U. S. Labor Department booklet, "Labor Firsts in America."

Carl's Cleaning Service

521 S. Main St.

Chelsea, Mich.

Professional Carpet & Upholstery Cleaning

BUSINESS - RESIDENTIAL

FREE ESTIMATES

Phone 475-8007

McCalla Feed Service

Phone 475-8153

12875 Old US-12 E.

Chelsea

WAYNE DOG FOOD
WAYNE CAT FOOD
WATER SOFTENER SALT
BIRD FEEDS
SUNFLOWER SEEDS
HORSE FEEDS
RABBIT FEED

Bird Houses - Dog Houses

Hoffman Tire & Service
7 miles west of Chelsea
13660 E. Michigan
Grass Lake 522-8542

Delta
THE SIGN OF QUALITY TIRES
CERTIFIED IN TUNE UPS & ENGINE REPAIR

A & W CHELSEA
1-94 and M-52
Special Every Tuesday
CONEY HOT DOGS
45c

Special Every Wednesday
FOOT LONG HOT DOGS
and **ROOT BEER**
\$1.00

Open 7 Days A Week
475-2055
Save Time - Call Orders in Ahead

PLEASE DON'T SQUEEZE THE SOFTENER!

You'll be tempted to run up and hug this Crystalline Water Softener once you discover how much it improves problem water and that you can buy it for as little as \$239.95!

As Washtenaw County's Water Conditioning Specialist, we feature a complete line of attractive, durable and efficient Crystalline Water Softeners. Our FREE water analysis will tell you which model will most economically meet your needs.

Visit our convenient new showroom or call us today.

Phone 769-7665

crystal clear

Open Mon-Fri 8 a.m. to 5:30 p.m., Sat 8 a.m. to 4 p.m.,
6043 Jackson Road, (3/4 mile west of Zeeb)

IN-SEASON SPECIALS

FREEZER SWEET CORN
BY THE BAG

GREEN BEANS
YOU PICK

PEACHES and APPLES
By the Bushel

TOMATOES and GREEN BEANS
YOU PICK
and other fresh fruit and vegetables

FARM BAKED DONUTS and BREAD

GEE FARMS

OPEN DAILY, 8 a.m. to 7 p.m.
14928 Bunker Hill Rd, Stockbridge Ph. (517) 769-6772
Take M-52 north to Territorial, turn west, crossing M-106 to Bunkerhill Rd., north 1 1/2 miles to GEE FARMS.

STOP. DETOUR

Unless you're crazy about the drive, there's no real reason to drive into Detroit looking for new car bargains. Rampy Chevrolet in Ann Arbor is a lot closer and you'll get the same low prices you find in Detroit—maybe even lower. At Rampy you'll also find the kind of careful, competent, come again service you expect from small town folks who know their neighbors.

You see, Rampy's not just the biggest Chevrolet dealer in Washtenaw County, he's got the biggest dealership of any kind in the country. That means that he's governed by the same kind of high volume economics you've been driving all the way into Detroit to find.

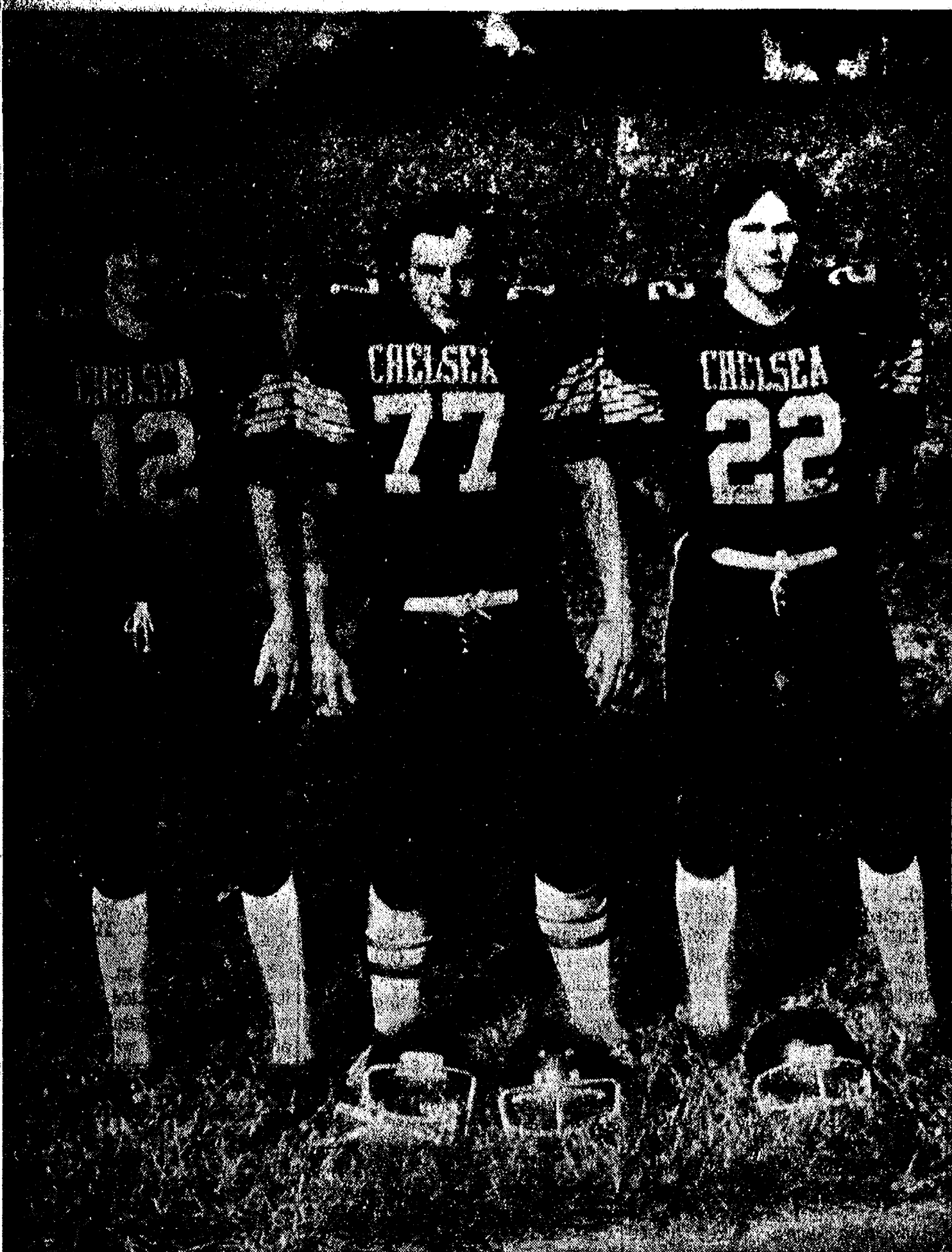
On the other hand, Ann Arbor is a town where people do know each other. Word gets around. And the word is that Rampy gives good service after the sale. As a matter of fact, Rampy's service department has been used as a model for training other Chevrolet dealers.

Isn't it time you took a detour?
Before you drive all the way into Detroit looking for a new car... stop at Rampy.
We don't think you'll go any further.

Rampy CHEVROLET
CORNER JACKSON & WAGNER RDS., ANN ARBOR, PHONE 663-3321

Rampy sponsors the Huron Valley Corvette Club. For information call 482-3303.

Gridders of the Week



AL AUGUSTINE (22), tri-captain over the 32-member Chelsea Bulldogs, is a senior playing his second year on varsity and looking forward to a better performance this year. "This first step up to the varsity team is really a shock in a lot of ways. This year I know that I feel much more at ease and will be a better player because of it," he commented. Al is an offensive tailback and defensive linebacker and likes both with equal enthusiasm. As a tailback his job is to get the ball from the quarterback, find a hole in the opponent's defense, "run!" As a linebacker Al said "I get a better view of the field and it's easier to get the tackle. I feel I'm good at both because I have a lot of speed and agility which is important to get around on the field and get to the ball." Instead of picking out one or two teams he thinks will be the ones to defeat, Al says "we've got to get up for every one of them. You can't play easy in one and then harder for another. If the momentum is started we can win them all," he said. Al is the son of Dale and Helen Augustine, 20331 Jerusalem Rd.

JESSE COBURN (12), is a senior playing his second year on varsity and one of the three captains of the 1978 Bulldog team. At 6'3" and 168 pounds, Jesse plays quarterback and occasionally defensive halfback. Feeling good about the recent win over Tecumseh, 7-6, he said "we played very good defense and didn't make a lot of mistakes. We are

a team where it isn't just one or two players that make us good, but everyone's combined effort." Jesse sees both Brighton and Novi as being especially tough teams "but with our strong defensive showing and a developing offense we intend to do better than the 4-5 record set last year," he commented. Last year Jesse threw six touchdown passes and played in every game. He is the son of Jesse and Marjorie Coburn, 404 Chandler St.

TOM BAREIS (77), completes the triad of captains for the Chelsea varsity football team this season and is entering his third year on varsity as a senior. With more than six years' experience in football, Tom plays the position of tackle on both offensive and defensive. At 6'0 and 248 pounds, he likes to see a hard-hitting, quick game and prefers playing defensive tackle because "I can play a little stronger against the opponent." Tom described the recent win over Tecumseh as "close, but there was a great play in the second quarter when Augustine made an interception and scored our only touchdown," he said. "We've got to get the offense moving faster off the ball and then we can go through the season undefeated," he added. Like his associate tri-captain Jesse Coburn, Tom sees Brighton as the team that has "defeated us too many times and this is the year for us to get them." Tom is the son of Oscar and Mary Bareis, 306 Grant St.

Packards Attend Family Week-End at Air Force Academy

Eight family members and friends of Gary Packard, Jr., 1978 graduate of Chelsea High school and recent appointee to the Air Force Academy, traveled to Colorado Springs, Colo., over the Labor Day week-end for the Academy's parents and family week-end.

Traveling were Mr. and Mrs. Gary Packard, Sr.; their son John, Mac; daughter Debbie and hus-

band Don Noye; grandmothers, Mrs. Bernice Miller and Mrs. Mac Packard; and friend Michelle Gauthier.

During the eight-day trip, the group attended church at the nationally-known Air Force Academy Chapel; witnessed the field parade with 4,400 cadets and officers; had dinner at the giant mess hall overlooking the Rocky Mountains;

a trip up Pikes Peak; and visited the gardens of the Gods rock formation, the Circle W. Ranch and the aftermath of a freak hail storm which left three city blocks in shredded trees and leaves.

Canor trips along the Huron River are fun in the fall—with one of the favorite routes stretching from southwest of Pontiac, through Kensington Metropark near Millford and on to Hudson Mills, northwest of Dexter. Two canoe trips are available at Delhi Metropark. For details contact 769-8086 (Skip's Canoe Rentals) or 426-8211 (Hudson Mills Park Office).

Subscribe today to The Standard!

Sylvan Township Board Proceedings

Minutes of the Sylvan Township meeting held on Sept. 5, 1978.

Meeting was called to order by Supervisor Schoenberg with the following members present: Trustees Lesser and Carruthers, Treasurer Pearsall and Clerk Murphy. Minutes of the last meeting were read and approved.

Motion by Carruthers, supported by Lesser, that bills be paid as presented. Motion carried.

Discussion followed on the problem of the Highland Road fill.

Motion by Pearsall, supported by Lesser, to approve the re-zoning of the Milladore Liebeck property on Old US-12 West from RC to AG as presented. Motion carried.

Motion by Murphy, supported by Pearsall, to approve the re-zoning of the Rickerman property on M-52 from AG to LC as presented. Motion carried.

Discussion followed on the map for the Master Plan.

Motion by Murphy, supported by Pearsall, approve the DNR recommendation to limit the speed on Mill Lake as presented. Motion carried.

Correspondence was read from the Washtenaw County Road Commission confirming that they will supply the necessary engineering necessary for the Township Private Road Ordinance.

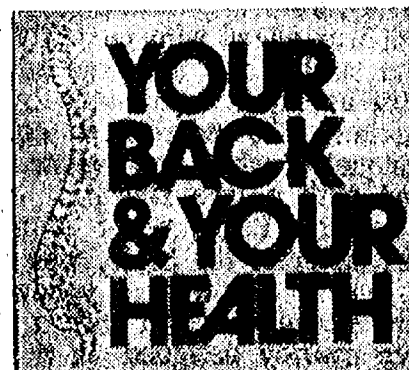
Harry Mertens presented his zoning report.

Motion by Murphy, supported by Lesser, to approve the resolution as presented by Washtenaw County regarding Ann Arbor SMSA. Motion carried.

Motion to adjourn.

Daniel Murphy, Clerk.
Donald Schoenberg, Supervisor.

(Advertisement)



"Surprise" benefits of chiropractic

Ask most people what chiropractic is and what it can do and they'll probably say that it's a method of treating back problems. They're right, of course. Chiropractic does deal a lot with back strains and sprains. But that's only part of the story.

Every chiropractor can tell you many cases in which patients derived surprise benefits. A man comes in to seek help for an aching back and finds to his delight that not only the back feels much better but the chest pains he's endured are eased considerably. A woman whose back was adjusted happily reported that her migraine headaches went away, as well.

Such things are not at all surprising to the chiropractic practitioner. While his intensive training seemingly equips him to apply his skills to back problems, he knows that the nerves that branch out from between the vertebrae either directly or indirectly serve bodily functions.

When one of these moveable vertebrae is out of position, it can dramatically affect the nerve and the organ. So when the chiropractor adjusts the spine—moves the vertebra back to where it belongs—a lot more than the back itself can benefit. And that, really, is the whole basis of chiropractic.

"Copyright 1975 by International Chiropractors Association"

Farm Exports Reported Up

If projections prove true, by the end of September (end of fiscal year 1978) the U.S. will have a new record in exports of agricultural commodities. A USDA report said that U.S. agricultural exports now appear likely to total \$28.6 billion. Expanded export volumes of wheat, soybeans and products, and feed grains get the big share of the credit. The largest part of the anticipated volume increase is a 6 million metric ton rise in wheat exports, a 4.4 million ton rise in soybean exports, and a 3 million ton rise in feed grains. U.S. agricultural imports are expected to go up only a little over last year's \$13.4 billion. Consequently, the U.S. agricultural trade surplus is expected to be a new high of almost \$15 billion.

Telephone Your Club News To 475-1371.

PUBLIC HEARING

Notice is hereby given by Lima Township Board of Appeals to hold a public hearing on Sept. 20, 1978 at Lima Township Hall for a conditional use permit for Floyd and Martha Henry to do auto repairs, mechanical and body work in a C-1 district.

LIMA TOWNSHIP BOARD OF APPEALS

Harold Trinkle, Chairman

YOU'RE 50 TODAY RUSS!

You Read It First in The Standard!

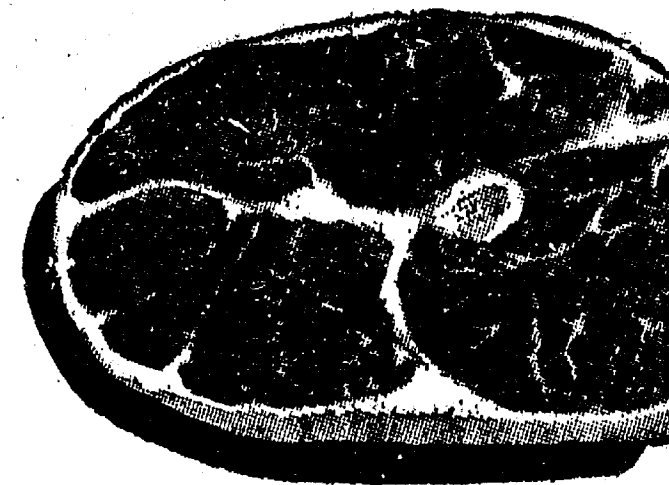
Jiffy market

Big Enough To

Serve You . . . Small Enough To Know You!

PHONE 475-1701

SALE PRICES GOOD SEPT. 14-SEPT. 17, 1978



Tender Beef with Flavor!

U.S.D.A. CHOICE
ROUND STEAKS

FULL CUT \$1.69 lb.

JIFFY MARKET TASTIEST
TENDEREST CHOICE MEATS
U.S.D.A. CHOICE

Swiss Steak	lb.	\$1.59
Top Round	lb.	\$1.79
Cube Steak	lb.	\$1.89
Beef Stew	lb.	\$1.29
Ground Chuck	lb.	\$1.39
Short Ribs	lb.	59¢

FARMER PEET'S RE-PEETER

SLICED BACON 1-Lb. Pkg. \$1.49

YOUNG - LEAN - TENDER

PORK
STEAK

\$1.29 lb.

YOUNG - TENDER

BEEF
LIVER

49¢ lb.

HOME-MADE

PORK
SAUSAGE

\$1.29 lb.

Need Something Special?

LARGE ROAST?
THICK STEAK?
HAM PLATTER?
or
WHAT EVER?

Call
Ahead
475-1701

MEDIUM EGGS . . . doz. 57¢

KRUNCHEE

POTATO
CHIPS

8-Oz. Bag 59¢

KOOL-AID

Assorted Flavors

0.16-Oz. Pkg. 10¢
Makes 2 qts.

U. S. NO. 1

MICHIGAN
POTATOES

10-Lb. Bag 89¢

WESLEY'S QUAKER-MAID
FLAVOR OF THE MONTH

NEOPOLITAN
ICE CREAM

1/2 gal. \$1.39

FARM MAID HOMOGENIZED

MILK gal. \$1.49

7-Up, Diet 7-Up,
Grape, Orange,
Barrelhead Root Beer
Reg. or Diet

6 1/2-Oz. Cans \$1.19

FARM MAID SPECIALS

LOW-FAT
MILK

\$1.49 gal.

CHIP
DIP

1/2 pt. 29¢

ORANGE
JUICE

1/2 gal. 89¢

Bunny Pop
POPCORN

2-Lb. Bag 39¢

WAY BAKING CO - SPECIAL 3 LOAVES FOR \$1.09

KLEEN-MAID BREAD . . . 1 1/4-Lb. Loaf 39¢

Open With Complete Service, 7 Days A Week
TOP VALUE 7 a.m. MORNING TO 10 p.m. NIGHTS
FOODS

Sale Prices
Sept. 14
Thru
Sept. 17

MEN—WOMEN
One of the world's
largest training
schools is hiring.



Where else can you learn the skills listed below, and get paid while you learn?

Dental Technician
Radio/TV Systems
Specialist
Administration
Personnel
Accounting
Truck Mechanic
Legal Clerk
And hundreds of others.

Call Army Opportunities
668-2085

Join the people who've joined the Army.
An Equal Opportunity Employer

FEED

FOR PROFIT

Feed Formulas Tested,
Proved To Get Results

Extra proteins, vitamins and minerals in proper balance, scientifically blended, make our feeds real profit producers for you.

Farmers' Supply Co.

Phone GR 5-5511

Community Calendar

Week of Sept. 14-21
1978

Rebekah Lodge No. 130 resumes meetings, Tuesday, Sept. 19, 7:30 p.m.

OES family pot-luck, Wednesday, Sept. 20, 6:30 p.m., Masonic Temple. New members honored.

Lamaze childbirth preparation classes. For information call 475-9358 or 475-9316.

Chelsea Community Hospital Auxiliary general business meeting, Monday, Sept. 18, 8 p.m. in the surgical center lounge.

Rogers Corners Study Group, Tuesday, Sept. 19, 8 p.m. in Zion Lutheran church hall. Hostess, Leona Osestoski; co-hostess, Francis Manzel. Remember to reveal secret pal.

Food Stamp Outreach Program has various kinds of literature about the Food Stamp program. You may receive this information by mail, by calling the Food Stamp Outreach office, Monday through Friday, 8 a.m. to 5 p.m., 994-1863.

Senior Citizens meet the third Friday of every month. Pot-luck, games, and cards at St. Mary's school, 6 p.m.

Lyndon Township Board regular meetings the third Tuesday of each month, 7 p.m., in Lyndon Town Hall.

American Legion hospital equipment is available by contacting Larry Gaken at 475-7891.

Chelsea Communications Club, fourth Wednesday of each month at 7:30 p.m., in the Chelsea Lanes basement meeting room.

Chelsea Community Farm Bureau, Thursday, Sept. 14, 8 p.m. at the home of Mr. and Mrs. Dorr Whitaker.

Chelsea Home Meal Service delivers one hot meal a day to elderly and disabled living in the Chelsea area. For more information, call Carolee Hoffmeyer, 475-8014, or Barbara Branch, 475-7644.

Chelsea Jaycee membership meeting, First Tuesday of every month, 7:30 p.m., Chelsea Lanes basement meeting room. For information call Charlie Sprawka, 475-1860.

Chelsea Co-op Nursery is now taking applications for the 1978-79 school year. To enroll, call Barb Raney, 475-1118 or Sue Machnik, 426-4776.

Lyndon Township Planning Commission meets the second Thursday of the month at the Township Hall, 8:30 p.m.

Sylvan Township Board meeting the first Tuesday of the month, at 7 p.m., at Sylvan Township Hall, adv.421

Chelsea Jaycee Auxiliary membership meeting, 3rd Tuesday of every month. Call the president, Sandy Meyer, for place and time at 475-2796.

Lima Township Planning Commission will meet on the second Monday of each month at 8 p.m. at Lima Town Hall. advx111f

Ann Arbor Area Ostomy Association, Thursday, Sept. 21, 7:30 p.m., 550 W. Huron St., Ann Arbor. Dr. Verne Hoshal is the speaker.

Washtenaw County Convalescent Homes Auxiliary first meeting of the fall season, Wednesday, Sept. 13, 3 a.m. at Zion Lutheran church, 1501 W. Liberty, Ann Arbor.

Dexter-Chelsea La Leche League, Tuesday, Sept. 26, at the home of Stephanie Krupp, 8005 Gregory, 7:30 p.m. Ph. 426-3953. Topic: "Advantages of Breastfeeding to Mother and Baby."

Huron Valley Mothers of Twins Club, Monday, Sept. 18, 7:30 p.m. Westminister Presbyterian church, 1914 Greenview, Ann Arbor. Mary Gray Greenwich on "Children's Literature." For further information call Karen Koch, 475-2874.

Sharon Township Board regular meeting first Thursday of each month, 8:30 p.m. adv421f

Lions Club, first and third Tuesday of every month, 6:45 p.m. at Chelsea Community Hospital.

Legion Auxiliary Installs Officers

Installation of officers and a report on the distribution of poppy funds to the five Michigan Veterans' Administration hospitals were part of the regular Herbert J. McKune Unit No. 31 American Legion Auxiliary meeting held at the Legion Home. A pot-luck dinner preceded the meeting.

District president Irene Nickel and secretary Mary Johnson were guests. In a report on the department convention held in Grand Rapids it was learned that a total of \$27,213.64 in poppy funds was presented to the five Michigan VA hospitals. The Ann Arbor hospital will use the money for repair of hearing aids, and educational and nurses' scholarships for veteran's children. The money will also be used for gifts which hospital patients may select from the hospital gift shop for their families at Christmas time.

District president installed the following officers with Loretta Doll as installing chaplain and Eleanor Hall as installing sergeant-at-arms.

Ruth Christwell, president; Evelyn Hale, first vice-president; Gladys Klumpp, second vice-president; Lucille Barr, secretary; Eleanor Hall, treasurer; Delphine Bolanowski, chaplain; Florence Merkel, historian; Ethel Buehler, sergeant-at-arms; Alice Miller, color bearer; and Alma Eisele, Gay Bolanowski, and Ermah Van Valkenberg, executive committee.

Children Collect \$54 For MD Fund in Sugar Loaf Lake Area

Fifty-four dollars was collected on behalf of the Jerry Lewis Muscular Dystrophy Tele-thon by Sugar Loaf Lake Rd. children Tracy Jarook, 10; David DeSmyther, 8; and Donna Jean and John Harris. They have collected donations for several years by going from door-to-door in their neighborhood.



Mr. and Mrs. Claude Teachout

To Observe 50th Anniversary

The children of Mr. and Mrs. Claude Teachout will host an open house in honor of their parents' 50th wedding anniversary from 2 to 5 p.m., Sunday, Sept. 24 at the UAW Hall, 218 S. Main St., Chelsea. Their children are Joyce Harrington, Reta of Gregory, Leo of Stockbridge, Carl of Gregory,

Waterloo Women's Society Re-elects Incumbent Officers

Waterloo Village United Methodist Women's Society met Wednesday, Sept. 6, at the home of Mary Clark for a pot-luck dinner at noon. Five members and three guests attended with the opening prayer given by Eloise Schulz, president. The group voted to order the "High Light" for another year and discussed the future visit to the Albion District United Methodist Women's Society in Marshall on Thursday, Sept. 28.

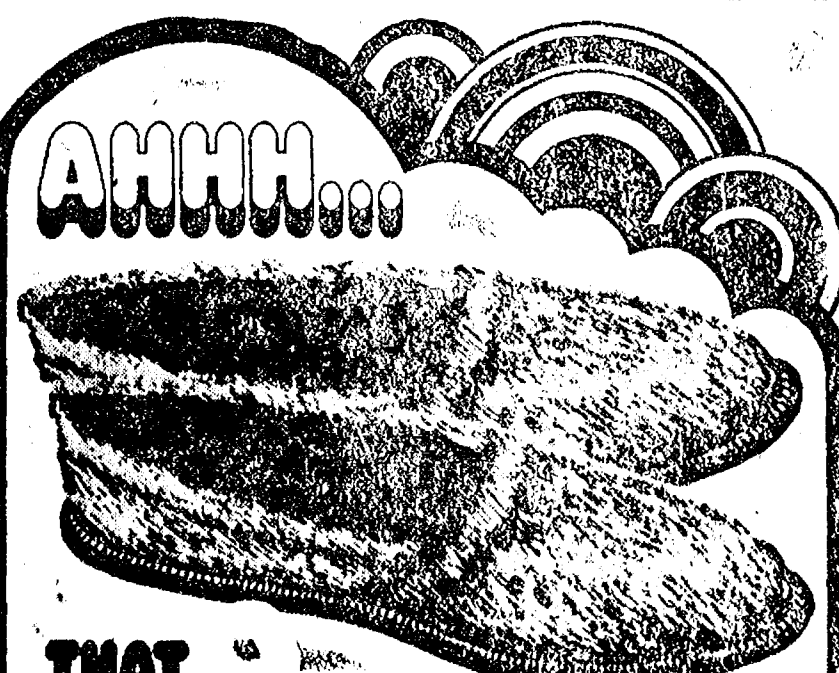
A pot-luck luncheon will be held Sunday, Sept. 24 at the Waterloo Township Hall. Sally Nichols moved that all 1978 officers of the Waterloo UMWS retain their positions for 1979.

Three thank-you notes were received by the group from Bessie Barber, Donald Beeman and the Youth Haven. The next regular meeting will be held at the home of Lavon Beeman on Wednesday, Oct. 4, with a pot-luck served at noon. The meeting closed with benediction.

Two Area Students Granted Academic Scholarships By WMU

More than 330 1978 high school graduates have been awarded Western Michigan University academic scholarships for enrollment in the fall semester there. The \$400 stipends are renewable each year for four years if a student maintains satisfactory grades. Test scores and high school grades were the only criteria for selection. Receiving a stipend from Chelsea was Donald Aldrich, 221 E. Middle St. From Dexter was Tracey Ritt, 2101 Baker Rd.

Please Notify Us In Advance of Any Change in Address



THAT JIFFIES FEELING

That soft comfortable feeling as he slips on the elegant Rex espadrille. Rich velour upper with durable vinyl sole. Machine washable & dryable. Gold, brown, green, sky blue, red, blue. Sizes: S, M, ML, L, XL. \$6.50 a pair.

Jiffies® by Interwoven®

LEISURE FOOTWEAR FOR MEN

Store Hours: Open Mon. thru Sat., 8 to 5:30

STRIETER'S MEN'S WEAR SINCE 1914



Mr. and Mrs. Michael David Borden

Kathy Buck, Michael Borden Are Wed at Methodist Church

Kathy JoAnne Buck and Michael David Borden exchanged wedding vows during an early evening ceremony at Chelsea United Methodist church, Saturday, Sept. 9.

Bishop M. Scott Fisher of the Church of Jesus Christ of Latter Day Saints, Ann Arbor, performed the nuptials for the daughter of Mr. and Mrs. Carroll Buck, 617 S. Main St., and the son of Samuel Borden of Ann Arbor and Patricia Borden of San Antonio, Tex.

More than 250 guests attended the wedding where LaVonne Harris on organ and Ron Harris on trumpet accompanied Marjorie Fisher as she sang "The Wedding Prayer" and Thomas Schulte sang "The Wedding Song."

Given in marriage by her father, the bride wore a white hoop gown of organza fitted with a chantilly lace bodice and empire waist. The gown was trimmed with matching lace as was the chapel-length train trimmed in seed pearls. Her veil was edged with chantilly lace and seed pearls and was adorned with appliques hand-made by her mother. She carried a colonial bouquet of white and yellow roses tied with a lace ribbon.

Kristine Bergman of Manchester, sister of the bride, was maid of honor. She wore a yellow tulle sleeveless gown with a daisy lace overlay designed in a princess style. She wore a lace cape and yellow picture hat. Her bouquet was made of daisies and yellow carnations.

A daughter, Rachel Elisabeth, Monday, Sept. 11, St. Joseph Mercy Hospital, Ann Arbor, to Bill and Mary Kumpf of Chelsea. Maternal grandparents are Mr. and Mrs. Marvin Parks of Brazil, Ind. Paternal grandparents are Bill Kumpf, Sr., of Brazil, Ind., and Mrs. Ellen Alexander of Coatsville, Ind.

Monday—Spaghetti with grated cheese, tossed salad, French bread and butter, fresh fruit, milk.

Tuesday—Cheese burgers on buns with trimmings, French fries, desert, milk.

Wednesday—Ravioli, buttered peas and carrots, bread and butter, yellow cake with fruit topping, milk.

Thursday—Bologna sandwich, potato sticks, buttered corn, ice cream, cookie, milk.

Friday—Pizza, buttered vegetable, juice, bread and butter, fruit and cookie, milk.

While today's urban dweller certainly lives in a noisier environment than most persons residing in rural atmospheres, farmers also may encounter excessive sound levels.

Bridesmaids were Nancy Cooper of Gregory; Debra Wiebe of Cleveland, O., sister of the bridegroom; Mary Landwehr of Cement City; and Lola Worden of Chelsea. They wore gowns identical to the maid of honor's.

For her daughter's wedding, Mrs. Buck wore a floor-length cream polyester long-sleeve gown with lace cape trimmed in gold. Her corsage was made of coral roses.

Amy Borden of Ann Arbor, sister of the bridegroom, was flower-girl. She wore a yellow dress trimmed in white lace and carried a basket of yellow and white daisies. Robbie Bergman of Manchester, nephew of the bride, was ringbearer.

Scott Dentler of Ann Arbor was best man. Ushers included Steven Bergman of Manchester, brother-in-law of the bride; John Wiebe of Cleveland, O., brother-in-law of bridegroom; and Ronald Borden of San Antonio, Tex., brother of the bridegroom. The bridegroom wore a white tuxedo and the groomsmen wore forest green tuxedos.

A reception was held in the Chrysler UAW Union Hall. Samuel and Barbara Brabant, uncle and aunt of the bride, were host and hostess. The wedding cake was made and cut by Betty Jurquet, aunt of the bride, assisted by Sue Buck, aunt of the bride. No-



BELSER-LOEGEL: Mr. and Mrs. Frederick Belser, 216 Park St., Chelsea, have announced the engagement of their daughter, Elizabeth Anne to Michael Allan Loegel of Kinde, son of Mr. and Mrs. George Loegel, of Parchment. Elizabeth is a 1973 graduate of Chelsea High school and a 1977 graduate of Kalamazoo College. She is employed by Sybra, Inc., Ann Arbor. Her fiancé graduated from Parchment High school in 1973 and from Kalamazoo College in 1977. He is employed by North Huron Public schools as a third grade teacher in Kinde. They plan a Dec. 29 wedding in Chelsea.

Appreciation Day Program Set for Assembly of God Sunday School Staff

A day of appreciation for the Sunday school staff at the Assembly of God church, Old US-12, Chelsea, has been designated for Sunday, Sept. 17, according to Pastor Richard Coury. A pot-luck luncheon will be served following the 11 a.m. worship service and a "singspiration" accompanied by the Jerry and Lewis

reen Williams served punch and Pat Brady attended the guest book. The newlyweds took a four-day honeymoon to Mackinac Island and will reside at 320 Union St., Grass Lake.

The bride is a 1975 graduate of Chelsea High school and is employed by the Chelsea Community Hospital. The bridegroom is a 1975 graduate of Pioneer High school, Ann Arbor, and is employed as a driver-mechanic for the Chrysler Proving Grounds.

FARLEY CONSTRUCTION
522 HOWARD RD.
ADDITIONS • REMODELING
REPAIRS
NEW HOMES

475-8265 or 475-7643

COME ON IN,
CHELSEA.
IT'S

National Chevy Week!

We're dealing
on cars and
trucks now!



Chevrolet GREAT YEAR-END DEALS ON '78s IN STOCK!
Come to where the value is... right now!

LLOYD BRIDGES CHEVROLET
FOR QUALITY, SERVICE & PRICE,
Travel With Lloyd
CHELSEA 475-1373

GO **GAMBLES**
110 N. Main Ph. 475-7472

Refinishing Can Be Easy
If You...

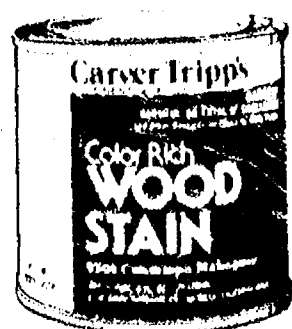
DON'T STRIP!

USE CARVER TRIPP'S®
COLOR RICH WOOD STAINS.

Don't strip off that old finish. Forget the work. Forget the mess. One coat of Carver Tripp's Color Rich Wood Stain lets you re-do old finishes to look like new. Try it today on...

- Woodwork
- Paneling
- Furniture
- Cabinets

\$4.99 for one qt. can



Don't Strip.
Use Carver Tripp.



Real Estate

By PAUL FRISINGER

REALTOR

HOW TO HANDLE CONDEMNATION

It's a real shock when you're told that part (or all) of your property will be taken for a new highway, sewer line, high tension line or other public use. It's usually an even greater shock when the representative of the public utility, highway department or government tells you what they propose to pay.

Relax, and react rationally. Your property may be taken if it is really needed for public use but you must be compensated at "fair market value." If the initial offer is unacceptable, make an appointment to discuss the matter with your attorney. If he agrees with your position, he'll arrange for one or more Real Estate Appraisers to ap-

praise the condemned property for you. With the facts they give him about "fair market value," he can represent you better in direct negotiation, at a preliminary hearing, or (if necessary) in a court action.

One caution—Have a clear understanding of the fees of attorney and appraisers before engaging them.

If there is anything we can do to help you in the field of real estate, please phone or drop in at FRISINGER REALTY CO., 935 S. Main St., Chelsea. Phone: 475-8683; evenings 475-2621. We're here to help!

11 New Teachers, Counselor Join Chelsea School System

Probationary contracts for 11 new teachers and a high school counselor were approved by the Chelsea School District Board of Education in two separate board meetings, Superintendent Raymond Van Meer announced.

Succeeding the high school counselor vacancy left by the retiring Mrs. Dorothy Conlin, who served as counselor for the last nine years, is Artemis Marmas. "Nikki" as she likes to be called, will also coach the girls junior varsity basketball team. She received a BS degree in physical education from the University of Minnesota, Duluth, Minn., in 1969 and went on to obtain a master's degree in guidance and counseling from Eastern Michigan University in 1974.

Nikki taught two and a half years in Wisconsin before joining the Capac school system where she accumulated four years of counseling experience. She lives in Ann Arbor.

At the high school, five new teachers have joined the staff. Ben Watson will instruct students in

physics and chemistry and replace Dave Maynard. Watson received a BA degree with honors from Michigan State University in 1978. He taught physics and physical science in Stockbridge for two years and lives in Dexter.

Filling the vacancy left by Sam Vogel who recently became the high school assistant principal will be Susan Jurma. In addition to assuming the position of government and U. S. history teacher, Jurma will be the debate team coach which was previously the responsibility of William Coelius.

Coelius will still teach the debate class while Jurma will travel with the debate team during the school year.

Jurma received a BA degree from Indiana University in 1973 and her master's degree in 1976, also from there. She has been a high school teacher for two years in Bloomington, Ind., and lives in Ypsilanti.

Wayne Welton, a 1972 graduate of Chelsea High school and a 1978 graduate of Central Michigan University with a BA in physical education, will be the new physical education instructor at the high school. He is also the head coach for the freshman football team. A resident of Chelsea, Welton is embarking on his first teaching assignment and fills the position recently vacated by Tom Ballistrere.

Mark Kerwin has replaced the retired Curtis Farley as the building trades instructor. He graduated from Eastern Michigan University in 1975 with a BS in industrial arts education. He holds a journeyman carpenter's license and a residential building license. In addition to having taught carpentry part-time at Washtenaw Community College he was building trades instructor at Mt. Clemens. He resides in Ann Arbor.

Margaret H. Luckham, who did her student teaching in Chelsea during the second semester of 1978, has become the full-time high school art teacher. She fills the vacancy left by Lori LaZebnik. Margaret graduated from the University of Michigan in 1976 with a BFA and obtained her teaching certificate from U. of M. in 1978. She lives in Ann Arbor.

At South Elementary school Sherri Plank, Marcia Quilter, and Gena Shoemaker have joined the staff. Sherri Plank and Marcia Quilter will both be teaching 3rd grade on a part-time basis. They replace the full-time position held by Mrs. Knight who is on a leave of absence. Sherri Plank taught in

Chelsea five years ago and received an elementary education degree from the University of Kansas in 1968. She lives in Chelsea. Marcia Quilter graduated from Bowling Green State University in 1983 with a BS degree in elementary education. She was a substitute teacher in Ohio and Garden City. She lives in Chelsea.

Gena Shoemaker has become a full-time 3rd grade teacher at South school, replacing Mrs. McDonald who has taken the position of media center director at South this year. Gena graduated from Western Michigan University in 1977 with an elementary education degree. She has done substitute teaching and lives in Chelsea.

Joining the Special Education Department, directed by Dr. DeYoung, are Bernadine Hynes, Michele B. Johnson, and Barbara J. Fisher.

Hynes is the Learning Disability teacher at North school. She graduated from Eastern Michigan University in 1978 with a BA degree and is certified to teach the emotionally impaired and learning disabled student. She is working on her master's degree at EMU and has been an education consultant for 73 United Methodist church schools. She lives in Dexter.

Michele Johnson is the new half-time speech and language teacher at South school. She holds a master's degree in speech pathology from Michigan State University and has had five years experience as a speech and language therapist at Lakeland school in Mountain Lake, N.J., for the hearing impaired student. She lives in Ann Arbor.

Barbara J. Fisher is a half-time Special Education Pre-School Program (PREP) instructor and is returning to the Chelsea teaching staff after a one year's absence. She holds a master's degree in learning disability from Eastern Michigan University and has taught at Ann Arbor Nursery school, substituted at Ypsilanti public schools, and has been a teacher consultant for the emotionally impaired and learning disabled at Whitmore Lake. She lives in Whitmore Lake.

Section Two

The Chelsea Standard

Pages 7-12

CHELSEA, MICHIGAN, THURSDAY, SEPTEMBER 14, 1978



GENERAL DWIGHT E. BEACH on his horse, Brigadoon, at the Beach centennial farm, 11350 Jackson Rd. The retired four-star general, who will address the Chelsea United Way dinner on Wednesday, Oct. 4, was born on this Chelsea farm which has belonged to the Beach family for 125 years.

United Way Funds Campaign Kick-Off Dinner Set for Oct. 4

The Kick-off dinner for the 1978 fund campaign of Chelsea United Way will be held at 7:30 p.m. at Chelsea Community Hospital, Wednesday, Oct. 4. Principal speaker at the event will be a distinguished Chelsea native, General Dwight E. Beach, in whose honor Beach Middle school was named.

General Beach, who is a director of Chelsea State Bank, was graduated from the U.S. Military Academy at West Point in 1932. Ten

promotions earned in 36 years of active service brought him to the rank of four-star general and Commander in Chief of the United States Army, Pacific. General Beach was born in the rural home where he and Mrs. Beach now reside.

On one of their barns affirms that the Beach family has owned this farm near Jackson and Lima Center Rds. since 1853.

Directors of Chelsea United Way, with divisional campaign leaders and their spouses, will attend the Oct. 4 dinner which is being provided as a contribution to the campaign by the hospital. Village leaders and township officials will join with United Way volunteers in urging support for the campaign which provides funds for 36 local, state and national social service agencies.

According to President Gerald Dresselhouse, the 1978 goal for Chelsea United Way in locally attributed contributions will be \$38,500. This includes support from Chelsea area persons who work elsewhere but designate Chelsea United Way to benefit from their gifts or pledges.

Will Connelly will again serve as general fund chairman for the 1978 campaign, aided by Dale Schumann, finance chairman. Chairperson in charge of arrangements for the dinner is Daphne Hodder.

Nature Center Offers Week-End Bog Walks

Michigan is blessed with nearly 45,000 lakes, while Ohio, our southern neighbor, has only three. Nearly all Michigan lakes were created 10,000 to 12,000 years ago by the Wisconsin glacier. Most are kettle-hole lakes, formed when huge ice blocks were buried in the sand, rock and other debris deposited by the melting glacier. The ice-blocks melted, leaving behind large, kettle shaped holes filled with water.

Some lakes are surrounded by floating mats of vegetation called bogs. These bogs are home to a fascinating variety of plants and animals. Spagnum moss is a major component of most bogs. Its hollow stems trap air and allow it to float. As successive layers of spagnum form, the bog becomes thick enough to support other plants. Rare and beautiful orchids, wild cranberries and insect-eating plants grow in floating bogs.

Their floating nature makes most bogs very treacherous and few Michigan residents have ever seen one. The Waterloo Interpretive Center has a floating walkway built over a bog, with park naturalists conducting guided walks on Saturdays and Sundays from Sept. 16 through Oct. 29. Two walks will be conducted each day, one at 2 p.m. and the second at 4 p.m. The walks will begin at the interpretive building and last about 90 minutes.

Organized groups may also arrange for programs at other times by calling the interpretive center at 475-8069.

Visitors from the Chelsea-Dexter area should take Middle St. west from the Chelsea business district past the Methodist home, where it becomes Cavanaugh Lake Rd. Proceed west on Cavanaugh Lake Rd. to Pierce Rd. Turn right on Pierce to Bush Rd., turn left on Bush Rd. The entrance to the Waterloo Interpretive Center is on the left.

Volunteers Sought To Assist Special Ed Tournaments

With the advent of two Special Olympic Soccer Tournaments in October, the Washtenaw County Special Olympics is seeking volunteers who can provide any amount of time to the events.

The State Games will be held on Oct. 6-7 at High Point school in Ann Arbor with mentally impaired children and adults from all over the state expected to attend. Last year, Chelsea Lyons Club provided several volunteers to run events and be timers.

Volunteers are also needed on Oct. 21-22 for a five-state and Canada Soccer Tournament to be held at High Point and the U. of M. More than 350 mentally retarded athletes from Kentucky, Ohio, Indiana, Michigan, and Illinois will be competing.

To volunteer you may call Nancy Cooper, area director, at 475-9131, ext. 49 or Doug Cooper, Washtenaw county co-area director at 769-8522, ext. 292.

Please Notify Us of Any Change in Address.

Waterloo Interpretive Center Needs Volunteers

Waterloo Interpretive Center completed its first year of operation this past week-end with more than 25,000 visitors passing through its doors and enjoying the surrounding trails.

Park naturalist Tom Hodgson is pleased with the turn-out, but a little concerned about the coming year. "We are expecting an increase in attendance while facing a reduction in staff," Hodgson explained. "For the past year we operated under a special project grant from CETA that supplement-

ed our own personnel with federal-funded positions. The grant expired on June 30. Some of the employees are being kept on with DNR funds, but we are left one naturalist short. We are hoping to fill in with volunteers so we will be able to maintain the current level of services," he said.

Individuals who would like to donate their time should call the Interpretive Center at 475-8069, and leave their name and telephone number. Volunteers are needed to assist with programs and/or to work behind the reception desk.

NOTICE TO ALL VILLAGE RESIDENTS

Please take notice that 1978 village taxes are due on or before September 20, 1978, at the Municipal Building, 104 East Middle Street. After September 20, 1978 all unpaid taxes will be transferred to the Washtenaw County Treasurer for collection.

VILLAGE OF CHELSEA

Richard Barnhill, Treasurer

Order Your Ariens Snow Blower Now

SAVE \$50 - \$75 - \$100

A Small Deposit Will Hold Your Purchase

CHELSEA HARDWARE

110 S. Main St., Chelsea

Ph. 475-1121

475-8689
475-2030

115 PARK ST.
CHELSEA, MICH.

MAYER AGENCY

(of Springer-Kleinschmidt Agency Inc.)

Your Local Independent Insurance Agency providing dependable protection and prompt claim payment through 10 of the nation's leading insurance companies.

HOME - AUTO - BUSINESS INSURANCE



Sheridan W. Springer
Ruth DeVine

Charles A. Kleinschmidt
Micky Quackenbush

RICK'S MARKET

20490 M-52

"The Store with the Spartan on the Door"

Phone 475-2898

CAMPBELL'S COTTAGE CHEESE

11-Oz. Crt: 35¢

B & M NEW ENGLAND BROWN BREAD

With Raisins
16-Oz. Loaf 77¢

DUNCAN HINES Swiss Choc. CAKE MIX

18 1/2-Oz. Pkg. 69¢

COMET CLEANSER

39¢

FLEISCHMANN'S 100% CORN OIL SOFT

MARGARINE lb. 99¢

RICK'S HOT BREAD DAILY

Weekdays by 3:30 p.m. Sat. & Sun., by 10:30 a.m.

(QUANTITY RIGHTS RESERVED)

SPARTAN KRISPY FRESH

POTATO CHIPS

16-Oz. Bag 89¢

KLEENEX BOUTIQUE

FACIAL TISSUES

Box of 125 2-Ply Tissues 59¢

VLASIC Sweet Midget PICKLES

16-Oz. Jar \$1.09

HEINZ 57 SAUCE

10-Oz. Bottle \$1.15

JACK RABBIT LGHT RED

KIDNEY BEANS

16-Oz. Can 65¢

SURFINE GRAPEFRUIT SECTIONS

16-Oz. Can 47¢

Culligan filtered conditioned SOFT WATER

LIKE HAVING A FAMILY SERVANT!

You'll find that you can clean kitchens and baths in a fraction of the time. Eliminates dulling hard water film... helps keep everything cleaner longer. Saves on soaps and cleaners.

ASK THE MAN WHO CARES! SAY -



2321 JACKSON AVE. ANN ARBOR

662-5665

**Ads
Taken
Till 1 p.m.
Tuesday**

PUT IT IN THE WANT ADS FOR RESULTS

**Just
Phone
475-1371**

WANT ADS

The Chelsea Standard
WANT AD RATES
PAID IN ADVANCE—All regular ad-
vertisements are charged for 25 words
or less, each insertion. Count each
line as a word. For more than 25
words, add 1 cent per word for each
insertion. "Full" ads of 100 words
or more are charged at a special rate.
CHARGE BY LINE—Same as above in
advance. With 10 cents per line per
insertion. If not paid before 1 p.m. Tues-
day preceding publication, pay in ad-
vance. Send cash or money order and
no bills.
DISPLAY WANT ADS—Rate, \$1.40 per
column inch, single column width,
only 1 point and 14-point type
only. No borders or borders type
minimum 1 inch.
CARE OF RESUME OR MEMORANDUMS—
Single paragraph style. Also per
insertion for 50 words or less, 1 cent
per word beyond 50 words.
COPY DEADLINE—1 p.m. Tuesday
week of publication.
ERRORS—Advertisers should check
their ads at the first publication. This
newspaper will not be liable for errors
in publication except to the extent
of the cost of the ad for the first
week's insertion. Adjustment for errors
is limited to the cost of portion
of the ad wherein the error occurred.

70 CHEVROLET Monte Carlo, V-8,
automatic, power steering, power
brakes, \$550. Ph. 498-2745 before 2
p.m. x14
DAY HELP NEEDED—Inquire in
person. Starting wages \$2.80 per
hour. McDonald's Restaurant, 373
N. Zeeb Rd., Ann Arbor, 48103. x14
UPSTAIRS one-bedroom apartment
available. Older person preferred.
Ph. 475-1845. x14

Fireplace Builder
field stone mason, block and brick
mason, tuck pointing.
FREE ESTIMATES
Call 475-8025 after 3 p.m.

Patrick Grammatico
7401f

BODY SHOP
COMPLETE FULL TIME
Estimates Available

PALMER FORD
22 S. Main 475-1391
401f

**STEP UP TO
KOZMA
CONSTRUCTION**
And
Step
Down
In
Price
LICENSED
BUILDER
FREE ESTIMATES
COMPLETE
CONSTRUCTION
SERVICES
CALL
LEN KOZMA
475-7452
291f

**CASH FOR
LAND CONTRACTS**
Any type of real estate
throughout Michigan. No
commissions or closing
costs. First National Accept.
Call Free 1-800-292-1550

WANT ADS

SIGNS
—FOR SALE
—EXPT
—NO SMOKING
—FOR RENT
—KEEP OUT
—NO HUNTING
—NO SWIMMING
The Chelsea Standard
800 N. Main St.
Chelsea, 475-1871 401f

**Complete
Body Shop
Service**
FREE ESTIMATES
Contact Ralph Machesky
Faist - Sprague
Buick - Olds, Inc.
475-8864 x511f

FOR SALE — Hay. Ph. 475-7709.
x501f

WANTED — Good home for love-
able little female kitten, 2 to 3
months old. Has been completely
checked by vet. Free. Call 475-8531.
x14

THORNTON
475-8628

A NEW HOME priced to fit your
budget! Just \$59,900! Country
kitchen, 3 bedrooms, 2 baths. Full
basement. 2 acres. Chelsea schools.
NICE & NEAT — Spacious 3-bed-
room home on a very pretty lot
with lots of fruit trees. Fireplace.
1 1/2 baths. Laundry room with
sewing area. 2 1/2-car garage. \$64,900.

SEE IT SOON! This cute 2-bedroom
home situated on 1 acre won't last
long! Includes fireplace and laun-
dry room. Chelsea schools. \$39,900!

VACANT LAND
MATURE PINES on this gorgeous
10-acre building site. Already
zoned for 1-4. Chelsea
schools. \$10,500.

TWO ACRES — Enjoy a beautiful
view of the countryside. A great
place to build. Quiet, rural area.
\$12,500.

LOOKING FOR privacy, seclusion,
and convenience? Choose one of
many 10-acre building sites in rural
area—but not too far from Chelsea
Village. From \$13,800.

**ROBERT H.
THORNTON
JR., P.C.
REALTOR**

EVENINGS:
Helen Lancaster 475-1198
George Knickerbocker 475-2646
Chuck Walters 475-2308
Barb Rybak 475-8498
Lang Ramsay 475-8138
Mark McKernan 475-8424
141f

J. R. CARRUTHERS
LICENSED
RESIDENTIAL BUILDER
CUSTOM HOMES
ADDITIONS/FIREPLACES
PATIOS
ROOFING/SIDING/REPAIRS
475-7234
CHELSEA 301f

WANT ADS

HANNAH's husband Hector hates
hard work so he cleans the rugs
with Blue Luster. Rent electric
shampooer, \$2. Chelsea Hardware. 14

McCulloch
Portable Generators
Chain Saws
WE SELL, SERVICE,
SHARPEN AND TRADE.
Chelsea Hardware 311f

**Floor Covering
Is Our Business**
TILE—SOLARIAN—HARDWOOD
CARPET—INSTALLATION—
REPAIRS
FREE ESTIMATES — 475-8621

Merkel
Home Furnishings 41f

**Pierson &
Riemenschneider**
475-9101

NEW LISTING — Wooded building
site, overlooking Sugar Loaf Lake.
\$7,900.

SUPER BUY—Bi-level, 3 bedrooms,
lots of storage, 35 minutes from
Ann Arbor, 15 minutes from Jack-
son. \$49,500.

CHELSEA AREA—Older 7-bedroom
home. Close to shopping and
schools. Large garden area. \$53,900.

ATTRACTIVE OLDER HOME — 3
bedrooms. Tastefully decorated.
Beautifully landscaped yard. \$56,
900.

EXCELLENT CONDITION — 3
bedrooms. Carpeted rec. room
plus pool table. New garage.
\$72,900.

QUIET LIVING—4 bedrooms. Old-
er home on 2 lots. Quiet neigh-
borhood. Unique sun porch. \$78,900.

**Pierson &
Riemenschneider**
111 Park St. - 475-9101
EVES:
Dai Queenan 475-1819
Jeanene Riemenschneider 475-1469
Norma Korn 475-9132
Patrick Merkel 475-1824
John Pierson 475-2064
Marilyn Chasteen 475-2934
141f

**Contemporary
Executive Home
on 3 acres**

BEAUTIFUL secluded setting in
Chelsea, 15 minutes from Ann
Arbor and only 2 1/2 miles from
downtown Chelsea. This 3,000 sq.
ft. all redwood home includes 5
bedrooms, study and a 25'x35' liv-
ing room with a huge fireplace.
The dining room and large foyer
are tiled in Mexican pavers. A full
walk-out basement and redwood
deck complete the home. Total
price, \$135,000. Large redwood box
stall barn and additional acreage
available.

Carl Johnson
Real Estate
125 E. Main St.
NORTHVILLE, MICH.
Ph. 349-3470 x14

YARD SALE — 2-family, 125 E.
Summit St., Chelsea, Sept. 15, 9
to 6, Sept. 16, 9 to 3. Electric range,
\$30. Lots of things. Ph. 475-2667.
x14

GARAGE SALE — 4 oak pews, \$25
each; round glass cocktail table,
\$100; women's clothing, size 8 and
10; many pictures and decorations.
Friday and Saturday, 10 a.m. to 6
p.m. 19816 Ivey Rd., Chelsea. x19
VAN FOR SALE — 1978 Dodge
Tradesman, \$4,900 or best offer.
Ph. (517) 851-7908. x14

**MAUSOLEUMS ★ MONUMENTS
BRONZE TABLETS ★ MARKERS**
**BECKER
MEMORIALS**
8033 Jackson Road
ANN ARBOR, MICHIGAN

WANT ADS

LEONARD REITH
Master Plumber
Licensed Electrician
Hot Water Heat
18238 N. Territorial
Rd.
Chelsea, Mich. 48118
Phone: 475-2044 521f

**We Buy
Land Contracts**

LARGE OR SMALL, residential or
commercial. Lowest discount in
Michigan. Ph. Dan Duncanson, Ann
Arbor Real Estate Co., Realtors.
688-8585. 471f

TRAILER SPACE for rent in Chel-
sea Mobile Home Park. Small or
medium trailers only. Ph. 1-563-
8344. x511f

DIE MAKERS — Two needed. New
work in die repair. Small to me-
dium stamping dies. Good pay. Full
benefits. Hatch Stamping Co., Dex-
ter, Mich. Ph. 426-3300. 14

**USED CAR
SALE**

1978 MERCURY BOBCAT 3-door,
1 owner. Yellow finish with
black interior \$2195

1976 FORD F-250 3/4-ton camper
special pick-up. Automatic,
power steering & brakes, aux-
iliary gas tank. Ready for any
camper. Black finish with ber-
mudy interior \$3995

1976 FORD F-250 3/4-ton pick-up,
Yellow finish, 31 speed
transmission \$3295

1976 PLYMOUTH VOLARE station
wagon. White finish with tan
interior. 6-cylinder 4-s p e d
overdrive \$2595

TERMS AVAILABLE
ALL PALMER USED CARS
FULLY RECONDITIONED AND
READY TO GO!

PALMER FORD
65 Years in Chelsea
Since April 15, 1912
Chelsea 475-1301 x141f

1968 PORTA-CAMPER — Sleeps
seven. Comes with four-burner
gas stove, sink. Good condition.
Ph. 475-1082. x15

TELLERS — We have openings for
full- and part-time tellers in our
new Chelsea office. Experience pre-
ferred. Salary commensurate with
experience. Advancement possi-
bilities. Excellent fringe benefits
program offered. Call 994-5555, ext.
206 for interview appointment. Ann
Arbor Trust Co., 100 S. Main St.,
Ann Arbor. Equal Opportunity Em-
ployer. x14

HELP WANTED — Full- or part-
time landscaping — tree removal
— snow removal. Year-around
work Huron Valley Garden Center.
Ph. 662-6714. x14

GARAGE SALE — Sept. 16, 9-5.
Mini-bike, organ, firewood, BB
guns, miscellaneous. 8853 Island
Lake, Dexter. x14

FOR SALE — 1978 Grand Prix
loaded, low mileage. Must sell.
Ph. 475-7833. x14

OPEN HOUSE
SAT. & SUN., 2:00-6:00 P.M.
1,232 square feet of luxury living. 2 full ceramic baths.
Fireplace. 2-car garage. Full basement. Professionally set
in a beautiful 1 1/2-acre lot. This home has everything
you're looking for, priced at \$64,900.
FOR LOT OWNERS \$53,900
When you buy a WEBER home you make the best
investment of your life!
TO FIND US: Take North Territorial to Hankerd Rd.
House is on corner of Noah & Hankerd Rds.
Weber Homes
12290 Jackson Rd., Chelsea, 475-2828

WANT ADS

CORRECTIVE HORSESHOEING
and trimming. Mike Brisbois.
Ph. 587-3038. x451f

VACUUM CLEANERS
Authorized Electrolux
sales and service.
James Cox
428-8444, or 428-8686
118 Riverside Dr., Manchester 481f

**ATTIC
INSULATION**
Class I
Cellulose Insulation
installed by trained
installers

**FOAM
WALL INSULATION**
Highest thermal efficiency
of any insulation type.

New and Existing Construction.

FOAM MASTERS
Complete insulation contractor
Licensed and Insured.

475-1625
Free Estimates x311f

— YOUNG —

We list and sell lake, country and
town properties. Eugene Young,
Real Estate & Builder, 878-3792,
11596 Dexter-Pinckney Rd., Pinck-
ney 48169. x341f

PIANO TUNING and repair. Qual-
ified technician. Call Ron Har-
ley. 475-7134. (1) x01f

ARBY'S ROAST BEEF Restau-
rants located at 3021 Washtenaw
Ave., Ann Arbor, 3015 Washtenaw
Ave., Ypsilanti, and 2245 W. Stadi-
um Blvd. are now accepting ap-
plications for counter, janitor and
slicer help. Applicants must be 18
years old. Hours can be flexible.
Great for students going back to
school or housewives who want
time away from home. Apply daily,
2-5. x14

SEMI-RETIRED PERSON part-
time to package craft kits for
mail order house. \$2 per hour to
start. John Alan Enterprises. Ph.
878-6079 for appointment. x14

**HUDSON'S
BRIARWOOD**
Now accepting applications for 30
or 40 hour people. Openings in
sales and restaurant. No experi-
ence necessary. Should be avail-
able for a couple of evenings a
week.
Apply in person, Monday through
Friday, 10 a.m. to 4 p.m.
PERSONNEL OFFICE
— 2nd FLOOR
An Equal Opportunity Employer x15

HAMMOND ORGAN, J-100 model.
Ph. 291-1635. x14

1975 4-DOOR NOVA — 6-cylinder
automatic. Ph. 878-6708. x14

QUAINT, lakefront 3-bedroom out-
tage on 2 lots at Rush Lake.
Shade and beautiful beach. Lot with
log cabin on Portage River, \$11,000.
Lady of the Lakes. Ph. 426-8830 or
878-9778 after 4. x15

WANT ADS

ROOMS by day, week or month.
Excellent for the single man or
refugee. Sylvan Hotel, Chelsea. Ph.
475-2911. x311f

ROOFING SPECIALIST—All types
of roof repairs, homes, barns,
commercial. Insurance repairs. As-
phalt shingles, hot built-up roofing,
cedar-slate tile-asbestos. Awnings
and porch enclosures. Siding and
storm windows. Call Joe Hayes for
free estimates. Manchester, 428-
8520. x31f

**RON MONTANGE
CONSTRUCTION**
—Full carpentry services
(rough & finish)
—Additions & remodeling
—Garages
—Repairs
—Roofing and Siding
—Cabinets & formica work
—Farm Buildings
—Excavating & trenching
QUALITY WORKMANSHIP
FREE ESTIMATES
Ph. 426-2585
or
475-1080 191f

PRO-TEX
A silage additive to help control
and direct fermentation of silage.
Better feed and less nutrition loss,
more energy.
Don't lose what you have paid to
grow. Protect it with Pro-Tex.
CHEM-STOR to treat your high
moisture corn as you combine to
save your drying cost.
Applicator For Rent
Harold Trinkle & Sons
475-8992 x15

WILL BABYSIT after school. Ph.
475-2806. 14

**Automotive
Rust Proofing
Cars and Trucks**

**Village
Motor Sales, Inc.**
CHRYSLER — DODGE
PLYMOUTH — DODGE TRUCKS
Phone 475-8661
1185 Manchester Rd., Chelsea
Hours: 8 a.m. to 5:30 p.m.
Tues. thru Fri. Until 8 Monday
9 a.m. to 12 noon Saturday 211f

GARAGE SALE — Thursday, Fri-
day and Saturday, Sept. 14-16, 138
Dewey St., Chelsea, 9 a.m. to 5
p.m. x14

FOR SALE — Portable, deluxe,
Frigidaire dishwasher, 5-cycle,
very good condition. Reasonable.
Ph. 475-8735 after 4:30 p.m. and
any time during week-end. x14

HORSE TRAILER for sale — 2-
horse covered trailer repainted
this year. Good tires. Hay manger
in front, walk-up ramp in back.
\$395. Ph. 475-9849 after 4:30. x14

BARN, STORAGE SHEDS, and
garages. 2-story barns as kits or
installed. Very reasonable. Ph. 227-
5100. x17

SID RODRIGUEZ
has joined our staff and is now
available to help you buy a home
or sell your house.

ED COY REALTY
426-3948
3249 Broad St.
Dexter, Mich. 48130

Ed Coy 426-8235
Sid Rodriguez 878-9171

Complete Multi-List Service x17

SNOW TIRES — HR 78-15 white
sidewall. Baby furniture. Ph. 426-
4869. x14

WOULD YOU LIKE a break from
your home patient care? Experi-
enced woman with references
would like a few hours of that type
of work. Reply to Box SE 12, in
care of The Chelsea Standard. x14

ANNUAL TURKEY SHOOT — Oct.
1, 15, 29, and Nov. 5 at Tri-County
Sportsmen's Club, 8640 Moon Rd.,
Saline. Breakfast from 9 a.m. to
noon. Shotgun from noon to 5 p.m.
Rifle, pistol, and shotgun blast.
Public invited. x17

WANT ADS

FOR RENT — 1977 Ford 12-Pass.
Club Wagon Buses and Econoline
Vans by the day, week-end, week
or month. Insurance. Palmer Ford,
222 S. Main, 475-1301 for rates. 351f

**CUSTOM
BUILDING**
LICENSED & INSURED
FREE ESTIMATES

**TOTAL
CONSTRUCTION
SERVICES**
—Homes, factories, warehouses
—Pole buildings
—Garages
—Remodeling - Additions
—Aluminum Siding
—Roofing
—Masonry Work, fireplaces, block
work, patios, etc.

**SLOCUM
CONTRACTORS
& BUILDERS**
Serving Washtenaw County
For Over 20 years
20700 OLD US-12
CHELSEA
Phone 475-8321 or 475-7611 21f

WEDDING STATIONERY — Pros-
pective brides are invited to see
our complete line of invitations and
wedding accessories. The Chelsea
Standard, 300 N. Main. Ph. 475-1371.
81f

TRAVEL TRAILERS — 13-ft. and
up; 10x55 ft. trailers. John R.
Jones Trailer Sales, Gregory, Mich.
Phone 498-2655. 431f

SEE US for transit mixed con-
crete. Klump Bros. Gravel Co.
Phone Chelsea 475-2530, 4920 Love-
land Rd., Grass Lake, Mich. x401f

CAR RENTAL by the day, week-
end, week or month. Full insur-
ance coverage, low rates. Call
Lyle Christwell at Palmer Motor
Sales, 475-1301. 251f

SEAMLESS ALUMINUM ease-
troughs, roofing, siding and
carpentry work of all kinds. Ex-
perienced installers. All work
guaranteed. For free estimate,
call R. D. Kleinschmidt Co., 428-
8836. x311f

We Are Pleased and Proud
to Announce That

SID RODRIGUEZ
has joined our staff and is now
available to help you buy a home
or sell your house.

ED COY REALTY
426-3948
3249 Broad St.
Dexter, Mich. 48130

Ed Coy 426-8235
Sid Rodriguez 878-9171

Complete Multi-List Service x17

SNOW TIRES — HR 78-15 white
sidewall. Baby furniture. Ph. 426-
4869. x14

WOULD YOU LIKE a break from
your home patient care? Experi-
enced woman with references
would like a few hours of that type
of work. Reply to Box SE 12, in
care of The Chelsea Standard. x14

ANNUAL TURKEY SHOOT — Oct.
1, 15, 29, and Nov. 5 at Tri-County
Sportsmen's Club, 8640 Moon Rd.,
Saline. Breakfast from 9 a.m. to
noon. Shotgun from noon to 5 p.m.
Rifle, pistol, and shotgun blast.
Public invited. x17

WANT ADS

PATCHING and PLASTERING
Call 475-7489. 331f

JIM W. FRENCH
Small
Dump Trucking
SAND - GRAVEL - STONE
Ph. Chelsea
475-1173 431f

Headquarters for
**RED WING
WORK SHOES**
Vogel's and Foster's 401f

CAR FOR SALE? Apartment for
rent? The Chelsea Standard has
a sign for most every need. 300
N. Main St., Chelsea. Ph. 475-
1371. 401f

SAND GRAVEL

**KLINK
EXCAVATING**
Bulldozer — Backhoe
Road Work — Basements
Trucking — Crane Work
Top Soil — Demolition
Drainfield — Septic Tank
Trenching, 5' up

Industrial, Residential, Commercial
CALL 475-7831 131f

R. L. BAUER
Builders
LICENSED AND INSURED
Custom Building
Houses — Garages
Pole Barns
Roofing — Siding
Concrete Work
FREE ESTIMATES
Call 475-1218 31f

FOR RENT:

Music Machines

Juke Boxes
for Parties,
Receptions or
Any Special Gathering.

CALL
Zemke
Operated Machines
Days 662-1771 x391f

**Western Square
Dance Lessons**
Taught by Wendell Abbott and
sponsored by
Stockbridge Squares.
Will Begin
Sunday evening,
Sept. 10
7 to 9:30
At Lyndon Town Hall
on N. Territorial Rd. just off M-52
FIRST LESSON FREE
For more information call 426-2414
or 428-8272. 14

SCHNEIDER'S GROCERY
CHOICE MEATS - FINE FOODS

12-OZ. CANS Sprite, Fresca Sugar Free Sprite 8 pac \$1.59 ECKRICH Smoked Sausage lb. \$1.39 1-LB. BOX NABISCO PREMIUM SALTINE Crackers 59c 32-OZ. JAR SMUCKER'S Grape Jelly 89c ECKRICH Kielbasa ... lb. \$1.39	12-OZ. PKG. RUSSETTE FROZEN Hashbrown Potatoes ... 2 for 59c McDONALD'S GERMAN CHOCOLATE OR CHOCOLATE NUGGET NUT Ice Cream 1/2 gal. \$1.39 12-OZ. CANS Coke, Tab, 8 pac \$1.59 10-LB. BAG MICHIGAN Potatoes ... 79c 6-OZ. CAN MINUTE MAID FROZEN Lemonade .. 5 for 99c
---	--

121 S. MAIN ST.
PHONE 475-7600
Your Store for
Alexander & Hornung's
Smoked Meats
We Accept
U.S.D.A.
Food Coupons

**Your
Approval**
is the
connection
of our
business.

Staffan Funeral Home
"Funeral Directors

LITTLE WANT ADS! BIG PLUSES FOR BIG RESULTS!

JUST PHONE
475-1371

WANT ADS

GARAGE SALE — Saturday, Sept. 16, 9 a.m. to 6 p.m. Some antiques, good books, records, furniture and many misc. items. Everything displayed is in working condition. 13500 Pleasant Lake Rd., miles east of M-52. x14

FRISINGER

BEAUTIFUL SETTING — 9 acres, 4 bedroom home, needs some interior trim completion, frame for old barn up. Chelsea schools, 475-8681.

BACK TO NATURE — 15 acres of woods and pines, large garden, small orchard, lovely 2-bedroom brick ranch, 2 full ceramic tile island kitchen, double oven, brick wall, first-floor laundry, full basement, fireplace, 2-car garage. Chelsea schools.

GENIC AREA — 4-bedroom home, 2 1/2 baths, dining room, 2 1/2-car garage, 7 acres. Chelsea schools.

ENJOY PEACE and quiet — Ideal family home, 5 bedrooms, 2 1/2 baths, 11 acres of land, wooded area, Chelsea schools, small barn for animals, \$79,850.

FRISINGER REALTORS

Chelsea 475-8681

Paul Knight 475-9230
Paul Erickson 475-7322
George Frisinger 475-2613
Herman Koenig 475-2613
Paul Frisinger 475-2621
Toy Peterson 475-2718
Bob Koch 475-4754
Dolly Alber 475-2801 x14tf

Window Screens Repaired

Reasonable rates.

Chelsea Hardware

10 S. Main Ph. 475-1121 30tf

AR & TRUCK LEASING — For details see Lyle Chriswell at Miller Motor Sales, 475-1301. 49tf

Custom Built Homes

At We Remodel too

Can count on us

Job Too Small

Trim Inside and Out

ough-in Only If

You Want to Finish

Adding Aluminum, 5" Gutters

Immediate Attention

DALE COOK & CO.

Estimates, Free

CHILDERS

Please Call

475-9153

DALE COOK

17tf

RENT — Fair Service Center for meetings, parties, wedding receptions, etc. Weekdays or weekends. Contact John Wellnitz, phone 475-1318. x31tf

FOR SALE — 1973 Dodge van Travco camper, Auto., V-8, 318, air, 13 and 14, evenings after 4 p.m., AM-FM radio. Ph. 475-8264. April 15 on, days 9 a.m. to 5 p.m. x44tf

CASHIERS WANTED

For full or part-time days and/or nights. Must be willing to work week-ends. Apply in person.

Rick's Market

20490 Stockbridge-Chelsea Rd. Chelsea x14

WANT ADS

GARAGE SALE — Sept. 15, 16, 7172 Glencoe, off North Territorial Rd. opposite Inverness Golf Course. Follow signs. Estate items, collectibles, cameras, books, paperama. x14

FOR SALE — Two clarinets, Vito and Reynolds. Each \$80. Ph. 475-1534. x6tf

Big Oktoberfest Saturday, Sept. 16

AT THE

KFC Recreation Park

3991 Dexter Rd., Ann Arbor

Park and bar open at 4:00 p.m.

German-style dinners served at 5:00 p.m. Dance music by Wendell Bauer's Tune Mixers of Detroit begins at 7:00 p.m. Admission is \$1 per person. You must be 18 or older for admission. Bring your ID card. Plenty of free parking on grounds. Public is invited. x14

HELP WANTED! Homemakers: Ambitious couple can make good extra money working from home, helping with our family business. 475-7310. x13

FOR SALE — 1968 Dodge pickup, good condition, \$350. Ph. 475-7764 after 2 p.m. x14

LIVE BAND MUSIC for weddings, parties, banquets, etc. Ph. 475-1811. x3tf

APPLICATORS NEEDED — 10 roofing foremen needed immediately, 12-year-old company offering good insurance plan and exceptional profit sharing. Year-round work. We furnish all equipment except hand tools. Call 313-426-4879 or stop at 7300 W. Huron River Dr. between 7 and 9 a.m. Sherriff-Goslin Co., 7300 W. Huron River Dr., Dexter. x52tf

MICHIGAN CERTIFIED Soy beans, treated, \$9.25 bushel, Braeburn Farms, Britton, Mich. 49229. Ph. (517) 451-4010 or (517) 423-5663. x38tf

ROOFING, siding, gutters, storm windows and doors. For a free estimate, phone 428-7104. Service Roofing Co., Manchester, Mich. x48tf

Energy Control

Insulation, Inc.

3921 Varsity Dr., Ann Arbor

Tired of high heating cost?

Save 40%

Rapco-Foam over 35 years and more than 2 1/2 million homes insulated.

UL Approved.

Guaranteed for life of structure.

Quality—Only trained and licensed installers.

Noise Reduction by 70-80%.

Anti-Rodent.

Anti-Insect.

Moisture Resistant.

Non-Allergic.

Rapco-Foam tested by 40 independent agencies.

For more information

Call Jerry

Days 973-2245

Evenings 475-1818

x41tf

Any Post

Office Experience?

Call for an Appointment!

We need temporaries for:

—General Office

—Clerical

—Typist (junior and senior)

—Switchboard Operators

MANPOWER

No fees! 665-3757 x15

WANT ADS

FOR SALE — Chevrolet Caprice, 1970, 4-door, air conditioner, runs well, needs some repair. \$390. Ph. 475-7275 after 6 p.m. x14

FOR SALE — New antenna rotor, \$25. Ph. 475-9938. x14

FOR SALE — 1971 Opel GT, very good condition, steel radials, \$1,200. Ph. 475-9351. x14

TUFF-KOTE DINOL of Ann Arbor is taking applications for employment. Applicants must be 18 and dependable. Mechanical knowledge helpful. Apply in person at 2075 S. Industrial, Ann Arbor, between 9 a.m. and 5 p.m. x15

WATERLOO REALTY

2-STORY, 3-BEDROOM HOME in Village of Stockbridge. Fieldstone fireplace in large living room. Paved dining room. Fully insulated. Needs work. Good potential. \$23,500.

10 ACRES and 2 ponds accompany this 2,000 sq. ft., 4-bedroom contemporary home. Two full baths, fireplace in living room, large family room. Big kitchen. Loads of storage everywhere. 3 miles to I-94 in Waterloo Recreation Area. Chelsea schools. \$72,500.

3-BEDROOM FARMHOUSE on 40 1/2 acres. Much remodeling done. Large new kitchen and bath. Well insulated and easy to heat. 125 ft. deep well. New drainfield. On good blacktop road. Month-Stockbridge schools. \$75,000. Land contract terms at an unbelievable 6% interest.

TWO ADJOINING LOTS, Village of Munith, 20'x30' garage in good condition. 5" casing well. Large shade trees and a couple fruit trees. \$7,800 for both.

1.5 ACRES, wooded, surveyed, blacktop road. Fifteen min. west of Chelsea with good I-94 access. \$6,000.00 Land contract possible. \$1,500. down.

WATERLOO REALTY

355 Clear Lake

JOANN WARYWODA, BROKER

Phone 475-8674

Evenings and Sundays:

Sue Lowe 1-517-522-5252

Carol Lakatos 475-7129

Evelyn White 475-1066 x14tf

ELECTRONIC TECHNICIANS and assemblers — The Allen-Bradley Co., located just east of Baker Rd. off Jackson Rd., is currently seeking qualified digital electronics technicians and electronics assemblers. Excellent fringe benefits and competitive salary apply at the Allen-Bradley Co., 62 Enterprise Dr., Ann Arbor. An equal opportunity employer. x14

WANTED; GOOSE

FEMALE GOOSE needs a mate to replace male Chinese goose who was killed. Please call 475-8569. x15

FOR SALE — 1978 Firebird Esprit, 805 V-8, p.s., p.b., auto., AM-FM cassette, tilt tinted glass rust proofed, must sell. Ph. 769-7665 between 8 and 5, 761-1879 after 6 p.m. Ask for Cindy. x14

ENGRAVING BUSINESS FOR SALE — \$4,500 with 1976 new Hermes Super GTX machine, 9 sets of type, metal cutter, desks, entire stock including trophies and parts, plaques, charms, etc. Ph. 662-3380. x38tf

FOR SALE — 1972 VW van, excellent cond., new radials, 47,000 miles, no rust. Ph. 662-5730 days, or 878-6820 eves. x1tf

FOR SALE — '73 Camaro LT 350 4-barrel, automatic, p.s., p.b., rally wheels. See to appreciate. Ph. 475-2629. x3tf

BOOK A TOY & GIFT PARTY Generous Awards

DEMONSTRATORS ALSO NEEDED

Over 300 newest most-wanted items.

Call Toll Free 1-800-243-7634

Or write SANTA'S PARTIES

Avon, Conn. 06001 x16

Part-time

Yard Care Wanted

WE ARE LOOKING for someone to trim, fertilize, apply weed killer, and generally take care of your yard on a year to year basis. Lawn mowing could be included if desired. Ideal part-time job for summers. Applicants should have lawn tractor. Reply to

MacDee, Inc.

13800 Luick Dr., Chelsea. Ph. 475-9165 x14

FOR SALE — 3-bedroom home on 10 acres, full basement, 2 baths, carpeted, Anderson windows, 2-car garage, \$85,000. Four 10-acre parcels, \$20,000 each. This property is on M-52 south, Lady of the Lakes, Ph. 426-8830 after 4 p.m. Ph. 878-9778. x14

WANT ADS

CHELSEA HIGH school lunchroom supervisor needed, 11:45 a.m. to 1:20 p.m. Monday through Friday. Ph. 475-9131. x14

FOR SALE — New antenna rotor, \$25. Ph. 475-9938. x14

FOR SALE — 1971 Opel GT, very good condition, steel radials, \$1,200. Ph. 475-9351. x14

TUFF-KOTE DINOL of Ann Arbor is taking applications for employment. Applicants must be 18 and dependable. Mechanical knowledge helpful. Apply in person at 2075 S. Industrial, Ann Arbor, between 9 a.m. and 5 p.m. x15

FOR SALE

2 OVEN AUTO ELECTRIC RANGE

12 FOOT FIBERGLASS BOAT

DRAPES AND RUGS

KELVINATOR REFRIGERATOR

MISCELLANEOUS ITEMS

SEPT. 16-17

10 A.M. - 5 P.M.

Entrance 50 ft. past the intersection of Joslin Lake and Embury Rds. on the left. Ph. (313) 498-2333. x14

ELDERLY, RETIRED COUPLE would like house or apt. to rent in Dexter. Ph. 231-1794 after 5. x14

FOR SALE — Female beagle dog, 4 years old, \$25. Ph. 426-3260. x14

Lovely 3-Bedroom

BRICK and aluminum bi-level on 1/2 acre partially wooded lot at Patterson Lake on 5-lake chain. Features large family room, 2 natural brick fireplaces, double attached garage, quality construction, owner moving out of state. \$64,900.

Call Dolores Reed

REAL ESTATE ONE

1-227-5005 or 1-478-7660 x14

CAMPER FOR SALE — Fits 1/2-ton pickup. \$550. Vincent Merkel, 7560 Jackson Rd., Ann Arbor. Ph. 978-6382. x32tf

1972 FORD STATION WAGON — Good transportation. \$350. Ph. 426-3349. x13

FOR SALE — Jenny Lind double bed and mattress. \$80. Pianola player piano, 10 years old. works well. Ph. 475-1873. x14

Production Planner

We have an opening for a production planner. The qualified candidate will be a self-starting, results-oriented individual who seeks challenge and opportunity.

Responsibilities include planning, scheduling and the follow-up of plant production in accordance with sales requirements, master plan schedules and the manufacturing department policies.

We offer a competitive starting salary and a full range of benefits.

Qualified applicants should submit their resume in confidence to Todd M. Colley at

Hoover & SK Ball Bearing Co.

5400 S. State St. Ann Arbor, MI. 48106

Equal Opportunity Employer x14

Positions Available

INSURANCE BILLING CLERK and

MEDICAL RECORDS CLERK

University of Michigan's Family Practice Center

Phone 475-1321

Mrs. Pennington x14

FOR SALE — 1968 Dodge, good condition, \$350. Ph. 475-7764 after 2 p.m. x14

STANDING HAY — Shares or sell by the bale, or whatever. Approx. 29 acres of alfalfa mixed. 2 miles north of Chelsea. Ph. 475-7633 or 941-2202. x14

WANT ADS

CARPENTER — Rough or finish. No job too small. Free estimates. x2tf

AMERICAN LEGION HALL Rental — \$75-\$125. Ph. Lena Behnke, 475-9231, evenings and week-ends. x11f

"WORM GROWERS NEEDED" Monthly income! Buy-back contract. Management opportunities! "Free brochure." (Call toll-free 1-800-448-4511, operator 381.) Worms, Box 4169, Jackson, Miss. 39216. x14

FOUND — Small black and white kitten, area of Madison and Jefferson St. Ph. 475-7599. x11f

NOW OPEN

Alber Orchard

Cider Mill

APPLES, sweet cider, barrels, kegs, honey, maple syrup, jellies, jams, etc.

9 a.m. to 6 p.m. 7 days per week

13011 Bethel Church Rd.

Manchester

428-7758

REAL ESTATE

CHELSEA AREA

NEW LISTING — On rural acre, 4 miles west of Chelsea. 6-yr-old 3-bedroom ranch, 1 1/2 baths, spacious country kitchen opens to patio. 2 1/2-car garage, full basement with nearly finished rec. room w/Franklin stove. New insulation, low fuel bills, low maintenance, mature trees, quiet neighborhood. Chelsea schools. Easy I-94 access. \$59,900.

Blanchard & Associates, Inc.

Office 769-9492

FOR SALE — 10 acres between Chelsea and Dexter, 8 miles from Ann Arbor, Chelsea schools. Perk tested. \$22,000 cash. Ph. 475-1051. x14

RHODESIAN RIDGEBACK Shepherd. Female, spayed, 2 years old. Free to good home. Ph. 682-2020. Robert, leave message. x11

ELEGANT turn-of-the-century home in the village of Stockbridge. Original woodwork throughout. 4 bedrooms, 2 baths. Michigan basement, large lot with huge maple trees, 2-story barn. Over 3,000 sq. ft. for \$49,900. Ph. Harry Baxter at Howell Town & Country, Inc., (517) 851-7595. x14

EXECUTIVE FAMILY with 2 children looking for home to rent in the country. Ph. 671-1048. x16

FOR SALE — Suzuki TM400, excellent condition, new engine, \$800. Ph. 475-9752. x14

FOR SALE — Doberman pups, 1 male, 2 females. \$50 each. AKC registered. Ph. 475-2909. x14

WANTED — Plow ground and standing hay. Ph. 475-2771. x3tf

LAND CONTRACTS & MORTGAGES wanted — Land contracts purchased, any amount, anywhere in Michigan. Lowest discounts. Can also make real estate loans. Call Dan Duncanson, Ann Arbor Real Estate Co., 668-8585. x11

FOR RENT — 800 square feet, utilities included. Many uses: storage, office, etc. Ph. 426-4535, leave message. x14

REAL ESTATE

EVERYTHING LIKE NEW in this 3-bedroom ranch, only two years old, 2 baths, family room with fireplace, attached 2-car garage, 24'x34' barn, Manchester schools. This home is on 1 1/2 acres, with many more extras. Price reduced to \$85,000.

PRICE REDUCED on 2-family home, located in the Village of Manchester, two 2-bedroom apts., appliances included on both, close to schools and shopping. Perfect for a young couple starting out. \$42,000.

SECLUDED COUNTRY SETTING for this 3-bedroom ranch in the Manchester area, with a double fireplace that adjoins living room and family room. 8x35 deck, attached 2-car garage, walk-out basement, 40x64 heated and insulated pole barn, on 10 acres for \$85,000.

OFFICE FOR LEASE — Available immediately, 1,000 sq. ft. in Manchester, plenty of parking space available.

MANCHESTER AREA — Building sites.

30 ACRES on Powers Dr., land contract possible. This can also be sold as 3 10-acre parcels.

33 ACRES W. of Bemis Rd., land contract.

Spear & Associates,

Mann Realtors

M

WANT ADS

FOR SALE — 15' fiberglass boat with 75 h.p. motor and tilt trailer. \$800. Ph. 428-9400. x14

BUNK BEDS with springs for sale. \$50. Good condition. Ph. 426-3362. x14

LOSE WEIGHT with Diet II. Helps cut appetite, gentle diuretic, effective, stimulant. Chelsea Pharmacy. x21

Complete Body Repair Service

Bumping — Painting
Windshield and Side Glass Replacement

Open Monday Until 8
CONTACT DON KNOLL
FOR FREE ESTIMATE

Village

Motor Sales, Inc.
CHRYSLER — DODGE
PLYMOUTH — DODGE TRUCKS
Phone 475-8661
1185 Manchester Rd., Chelsea
Hours: 9 a.m. to 5:30 p.m.
Tues. thru Fri. Until 8 Monday
9 a.m. to 12 noon Saturday

FOR SALE — Electric Hotpoint kitchen range. Ph. 475-9503 after 5 p.m. persistently. x81

CLOCKS — Fine selection of grandfather, father, wall, mantle, anniversary and decorative. All at substantial savings. Ph. 769-5507. x18

MICHIGAN CERTIFIED SEED
WHEAT — ABE OF ARTHUR. \$5.50 per bushel bagged and tagged, treated with Vitavax 200. Briggs Farms, Brighton, MI. 424-200. Ph. 517-4410 or 517-445663. Prices subject to change. x18

HELP WANTED — Full-time and part-time waitresses. Apply in person. Country Restaurant, 8121 Main St., Dexter. x16

HUNCH PRESS SETUP — Small to medium size progressive stamping. Good pay. Full benefits. Experienced only need apply. Hatch Stamping Co., Dexter. Ph. 426-3300. x14

HAY — Second cutting. Standing alfalfa. 172 acres. Ph. 436-4188. x101

I WOULD LIKE to baby-sit in my home, Monday thru Friday. Reliable and dependable. Good home atmosphere. Ph. 475-7474. x14

FOR SALE — Wheat straw to be baled in field. Ph. 475-8234. x14

1972 BLAZER — Like new tires and rims. AM-FM radio, 60,000 actual miles. \$3,000 or best offer. Ph. (517) 522-8832. x18

WANTED — 1 or 2 people to live in care for a 26-year-old man in wheel chair. Apartment and transportation furnished plus a large weekly salary. Ph. 475-8331 after 4 p.m. x14

ASHLEY WOOD STOVES — Available now. Hackney Hardware, Dexter. Ph. 426-4009. x19

SADDLE — Like new, hand tooled and laced, leather covered stirrups. Ph. 475-9682. x101

WANT ADS

DEMO

78 HORIZON 4-dr. auto, p.s., air stereo, rear wiper. SAVE

78 SAPPORO 2600 cc. auto, p.s., AM-FM, cruise control. SAVE

Driver Training Car

78 LeBARRON 4-dr., 318, auto, p.s., air stereo, rear wiper. SAVE

78 ASPEN SE 4-dr., 225, auto, p.s., p.b., air, 90-hp. SAVE

Used Trucks

78 DODGE W-500 dump truck. 4-wheel drive, V-8, 4-speed, p.s., p.b., Galeon 3 1/2-yd. box, 4-ton hoist, anti-spin, Diamond Hill snow plow, 5,843 miles. \$10,750. x14

76 DODGE D-200 Club Cab. V-8, auto, p.s., p.b. \$2995

74 FORD Ranchero. 351, auto, p.s., p.b. \$2995

71 DODGE D-300, 318, 4-speed, power brakes, 19-ft. stock rack with hoist. \$1295

71 FORD 1/2-ton. V-8, auto, p.s. \$795

Quality Used Cars

78 LeBARRON 4-dr., 318, auto, p.s., p.b., air, rear defroster. \$3195

77 ARROW GT, 2,000 cc. auto, AC, AM-FM, rust-proofed, low mileage. \$3995

75 CAMARO, 350, auto., p.s., stereo. \$3195

75 Vega 2-dr., auto. \$1995

75 DART Custom 4-dr., 6-cyl., auto., p.s., low mileage. \$2795

75 DODGE B-300 Sportsman, 109" wheelbase, 318, auto., p.s., p.b. \$2795

74 CHEVY Impala 4-dr., V-8, auto., p.s., p.b., air. \$1895

74 JEEP Wagoneer custom station wagon, 360, auto., p.s., p.b., 4-wheel drive, radial tires. \$3795

72 DODGE Monaco Brougham 4-dr., 360, auto., p.s., p.b., air, AM-FM, Michelin tires. \$1995

Village

Motor Sales, Inc.

CHRYSLER — DODGE
PLYMOUTH — DODGE TRUCKS
Phone 475-8661
1185 Manchester Rd., Chelsea
Hours: 9 a.m. to 5:30 p.m.
Tues. thru Fri. Until 8 Monday
Saturday 9 to 12

WANTED — Used infant car seat, stroller, baby walker. Ph. 475-2038. x14

FOR SALE — Gentle, affectionate puppies. 7 weeks old, part Beagle. Ph. 475-8998. x14

WANT ADS

FAMILY YARD SALE — Sept. 15, 10 a.m. to 4 p.m. in Chelsea. Housewares, household items, barbeque and yard items. x14

Wanted — 40-hr. week, small engine and power equipment service in local shop. Opportunity to train under experienced mechanic. Some related background preferred. Write Box 514, care of The Chelsea Standard, give me a call at 475-1119 after 6 p.m. C. Winans. x14

WANTED — Man to work in plating department of small electronics-related manufacturing firm. Must be 18 years old and dependent. No experience necessary; will train. \$3 per hour to start with rapid advancement, paid hospitalization plan, vacation and holidays. Apply in person. C & C Industries, Inc., 2718 Baker, Dexter between 8 and 12. x14

All Insurance Needs
In the convenience of your own home — or mine

N. H. Miles, Allstate
Call Only 475-8334

MOVING SALE — Yard and garden tools, tires, toys, furniture, sporting equipment, household items, and clothing. Sept. 15-16-17, 10-4, 1272 Park Lake Dr., just off Chamberlin, Dexter. x14

FOUND — Black cat, male, white flea collar. Very affectionate. Island Lake Rd. near Wylie Rd. Ph. 424-4138. x14

JUST ARRIVED
DUTCH BULBS
For Fall Planting
TULIPS — HYACINTHS
DAFFODILS — CROCUS

Chelsea Hardware
110 S. Main Ph. 475-1121

FOR SALE — 14-foot Fiberglass boat, family day-sailer. Sleeps six, trailer and cover. \$1,800. Ph. 475-2831. x15

FOR SALE — 2 bathroom sinks complete with marble-like tops and Delta faucets. \$30 ea. or \$60 for both. G.E. portable dishwasher, \$25. Feeders air conditioner and heater combination, \$30. Two 40-lb. propane tanks, \$30. Old Hotpoint electric stove, \$10. Call 475-8502 after 4 p.m. x15

NEED A HOME? Christian lady wanted to stay with elderly mother in Stockbridge. Good pay. Ph. 426-4343. x13

FOR SALE — 3,000-watt Wards generator, \$450, or swap for 8 h.p. or 10 h.p. garden tractor of equal value. Ph. 475-7724 after 2 p.m. x14

IMMEDIATE OCCUPANCY — Chelsea schools, \$84,900. Call Weber Homes, Ph. 475-2828 or 475-2857. x13

SAVE BIG! Clean rugs and upholstery with Blue Lustre. Rent electric shampooer, \$2. Chelsea Hardware. x13

DETROIT FREE PRESS — Newspaper delivery. Immediate openings for Chelsea, and Ann Arbor areas. For single copy delivery of Detroit Free Press. Dependable car needed. Commission and car allowance. Early morning hours. Good part-time work. Write Box 514, care of The Chelsea Standard, give me a call at 475-0121. x14

FOR SALE — Electric stove, \$60, lawn mower, \$20, rug, \$10, each. Kitchen chair, \$25, each. Hollywood bed frame, twin bed springs, front-loading washing machine, bar stools, portable washing machine. Ph. 475-9085. x14

FOR SALE — 1978 Pontiac Grand Prix. Many extras. 10,000 miles. \$5,800. Ph. 426-3887. x14

FOR SALE — Rye hay and straw. Ph. 475-8339. 8710 Workman Rd. 17. x14

FOR SALE — 1977 Yamaha TT 500 motorcycle. Ph. 475-1138. x14

HELP WANTED — 40-hr. week, small engine and power equipment service in local shop. Opportunity to train under experienced mechanic. Some related background preferred. Write Box 514, care of The Chelsea Standard, give me a call at 475-1119 after 6 p.m. C. Winans. x14

BY OWNER, CHELSEA — 4-bedroom colonial, large kitchen with built-ins and breakfast room, formal dining room, family room or studio, fireplace, 2,000 sq. ft. of living space, full basement, 2-car attached garage, patio, gas grill, fruit trees, village services, taxes reasonable. Must see to appreciate. Mid 70's. Call 475-9087. x14

IS IT VACANT GARAGE or barn space you have? I am looking for winter storage for a pick-up. Please give me a call at 475-1119 after 6 p.m. C. Winans. x14

FOR SALE — 20' Breezeaway travel trailer, \$2,200 or best offer. May be seen at 525 N. Main, Lot 2, Chelsea. x14

YARD SALE — Mon., Tues., Sept. 18-19, 9 to 3. All kinds of goodies: clothes, shoes, knick-knacks galore, Levis, 6 h.p. riding mower, helmet, radios, clocks, dishes, many items. Some furniture. Children's clothes also. Prices you won't believe. 3255 N. Lima Center Rd., Dexter, Mich., 4th house on left side of road from boat rental, Four Mile Lake. Ph. 475-9368. x40

FOR SALE by owner — 5 acres in Waterloo Rec. Area. Fully insured 3-bedroom house, shaded, with newly enclosed porch, 22'x24' attached garage, small orchard, small barn with pasture, organic garden spot, state land on two sides. \$38,900. Ph. (517) 622-4019. x18

RAIN OR SHINE — Saturdays open at 7 a.m. Tomatoes, peppers, cabbage, beans, onions, potatoes, carrots, variety of winter and summer squash. Baked goods — German pretzels, plus cinnamon rolls, variety of quick breads, whole wheat, white, and French bread, cookies, jams and jellies. Chelsea Farmers Open Air Market. x16

FOR SALE — Frost free side-by-side refrigerator-freezer, excellent condition. Girls 20" bicycle, like new. Ph. 475-9918. x14

LARGE GARAGE SALE — Sept. 15, 9 a.m. to 5 p.m. Collectibles, tools, furniture, clothes, canned jars, large claw foot bath tub, buck saws, books, much more. Take 16-32 south 4 miles to Grass Lake Rd., right to 1955S. x14

WANT ADS

FOR SALE — Siamese kittens. Blue Point and chocolate mix. White with dark ears. Priced but not registered. \$25, 403 W. Midland at Grant. x14

PIANO OR HARP — 1940s — Experienced teacher. Master of music from U. of M. Your home or mine. Ph. 475-7660. x16

BIKE FOR SALE — Gold, single speed, 20x1.75 wheel base. \$20. Also vintage sewing machine and cabinet. \$50. Ph. 475-1635. x14

YARD SALE — Sept. 15, 16, 17, 302 Wood St., Stockbridge. Oak and wicker furniture, gateleg table, Royal Dalton dishes, elec. ref., primitives, and lots of misc. items. x14

HOUSES FOR RENT on Clear Lake. Available Sept. 15 to May 15, 79. No heat. No children. \$175 plus utilities. Phone Ypsilanti 434-8715 or 485-3617. x15

Have You Been Thinking of Selling?

Then call us about Listings at 3 1/2% or don't complain about high real estate commissions.

COUNTRY RANCH for horse lovers. 4 bedrooms, 2 1/2 baths, large country kitchen with walk-out to redwood deck. Separate mother-in-law apartment suite. Large walk-out basement. 30'x40' 2-story horse barn, electrically fenced pastures hay field. 80's. x14

AFFORDABLE — 3-bedroom ranch. Immaculate. Old west side, near schools and shopping. Mid 40's. Ph. 655-6283. x14

CHARACTER is what you'll say when you see this 3-story older home with 7 bedrooms, 2 baths, huge living room with fireplace, formal dining room, 2 porches, full basement with rec. room and a large back yard. \$115,000. x14

PAINTING and end-of-season reupholstering, interior and exterior, large or small. Ph. 475-1503. x12

NEED A HOME? Christian lady wanted to stay with elderly mother in Stockbridge. Good pay. Ph. 426-4343. x13

FOR SALE — 3,000-watt Wards generator, \$450, or swap for 8 h.p. or 10 h.p. garden tractor of equal value. Ph. 475-7724 after 2 p.m. x14

IMMEDIATE OCCUPANCY — Chelsea schools, \$84,900. Call Weber Homes, Ph. 475-2828 or 475-2857. x13

SAVE BIG! Clean rugs and upholstery with Blue Lustre. Rent electric shampooer, \$2. Chelsea Hardware. x13

DETROIT FREE PRESS — Newspaper delivery. Immediate openings for Chelsea, and Ann Arbor areas. For single copy delivery of Detroit Free Press. Dependable car needed. Commission and car allowance. Early morning hours. Good part-time work. Write Box 514, care of The Chelsea Standard, give me a call at 475-0121. x14

FOR SALE — Electric stove, \$60, lawn mower, \$20, rug, \$10, each. Kitchen chair, \$25, each. Hollywood bed frame, twin bed springs, front-loading washing machine, bar stools, portable washing machine. Ph. 475-9085. x14

FOR SALE — 1978 Pontiac Grand Prix. Many extras. 10,000 miles. \$5,800. Ph. 426-3887. x14

FOR SALE — Rye hay and straw. Ph. 475-8339. 8710 Workman Rd. 17. x14

FOR SALE — 1977 Yamaha TT 500 motorcycle. Ph. 475-1138. x14

HELP WANTED — 40-hr. week, small engine and power equipment service in local shop. Opportunity to train under experienced mechanic. Some related background preferred. Write Box 514, care of The Chelsea Standard, give me a call at 475-1119 after 6 p.m. C. Winans. x14

BY OWNER, CHELSEA — 4-bedroom colonial, large kitchen with built-ins and breakfast room, formal dining room, family room or studio, fireplace, 2,000 sq. ft. of living space, full basement, 2-car attached garage, patio, gas grill, fruit trees, village services, taxes reasonable. Must see to appreciate. Mid 70's. Call 475-9087. x14

IS IT VACANT GARAGE or barn space you have? I am looking for winter storage for a pick-up. Please give me a call at 475-1119 after 6 p.m. C. Winans. x14

FOR SALE — 20' Breezeaway travel trailer, \$2,200 or best offer. May be seen at 525 N. Main, Lot 2, Chelsea. x14

YARD SALE — Mon., Tues., Sept. 18-19, 9 to 3. All kinds of goodies: clothes, shoes, knick-knacks galore, Levis, 6 h.p. riding mower, helmet, radios, clocks, dishes, many items. Some furniture. Children's clothes also. Prices you won't believe. 3255 N. Lima Center Rd., Dexter, Mich., 4th house on left side of road from boat rental, Four Mile Lake. Ph. 475-9368. x40

FOR SALE by owner — 5 acres in Waterloo Rec. Area. Fully insured 3-bedroom house, shaded, with newly enclosed porch, 22'x24' attached garage, small orchard, small barn with pasture, organic garden spot, state land on two sides. \$38,900. Ph. (517) 622-4019. x18

RAIN OR SHINE — Saturdays open at 7 a.m. Tomatoes, peppers, cabbage, beans, onions, potatoes, carrots, variety of winter and summer squash. Baked goods — German pretzels, plus cinnamon rolls, variety of quick breads, whole wheat, white, and French bread, cookies, jams and jellies. Chelsea Farmers Open Air Market. x16

FOR SALE — Frost free side-by-side refrigerator-freezer, excellent condition. Girls 20" bicycle, like new. Ph. 475-9918. x14

LARGE GARAGE SALE — Sept. 15, 9 a.m. to 5 p.m. Collectibles, tools, furniture, clothes, canned jars, large claw foot bath tub, buck saws, books, much more. Take 16-32 south 4 miles to Grass Lake Rd., right to 1955S. x14

WANT ADS

FOR SALE — Dining room table and chairs. High-A-red couch, 2 chairs, 1 recliner, and bedspread set. Ph. 475-2444 after 5 p.m. Ask for Mary or Lili. x17

FOR SALE — 1977 Jeep CJ-7, 18,000 miles, 4-cyl., 4-speed, 4-wheel drive, fiberglass top. \$4,950. Ph. 475-2936 after 5 p.m. Ask for Mary or Lili. x17

FOR RENT — 2-bedroom house in scenic country between Pinckney and Onondaga. Has fireplace and shop. Available Oct. 10. \$210. Reply Box No. SE-13, in care of Chelsea Standard. x15

WOMEN love HOST for carpet cleaning. It's faster, easier than shampoo and makes carpets new again. Rent the HOST machine. Morkel Home Furnishings, Chelsea. 475-8621. x14

SIGN (TRAILER TYPE) 4'x8', lighted, 300 changeable letters and numbers. For sale — \$35.00 per month. Call (517) 593-2372. x14

27.3% RETURN on 1900 Best-Sellers. Dropshipped: Giftware, Houseware, Hardware, Toys, Watches, etc. Our only notice now. Write Selfservice Wholesalers, Fowlerville, Mich. 48835. x14

FOR SALE — Single door refrigerator, \$50; electric stove, \$60; toilet clog, 3 single bed springs, 1 Hollywood bed frame, 4 chrome kitchen chairs, miscellaneous. Ph. 475-1442. x14

BACKYARD SALE — Sept. 16 and 17, 9 to 2 1/2 Jefferson St., Chelsea. Lots of goodies, OB tools, beam and rotor, lamps, dishes, toys, clothes in good shape. Wear uniforms and more. x14

FOR SALE — 1977 Dodge Aspen. Automatic, power steering, radio, Michelina tires. Ph. 475-2106. x14

NURSES AIDS — Join our quality care team. Experienced preferred. Best wages and benefits. Full or part-time. Call Mrs. Durkin, director of nursing services. Ph. 475-8663. Chelsea United Methodist Hospital. x15

PRIME OAK FIREWOOD — 4'x8' stock \$35, more if delivered. Pick-up and delivery between 8 a.m. and 5 p.m., Monday through Saturday. No pick-up, delivery or call on Sunday. Ph. 475-8524. x141

WANTED — AMBITIOUS COUPLE needing more income. Unusual opportunity for good earnings. Work together. Part-time or full-time. Ph. (517) 632-8831 between 7 p.m. and 9 p.m. x14

GARAGE SALE — Saturday and Sunday, 11 a.m. to 3 p.m. 7655 Werker Rd. Surplus stock from hardware store, summer supplies, household items, tools. x14

FOUND — Fishing pole and box of tackle. Ph. 475-8757. x14

LOST — Salt and pepper shauzner, near Sugar Lake Lake, answers to Jack. Ph. 475-8141. Reward, \$75. x14

NEED A HOME? Christian lady wanted to stay with elderly mother in Stockbridge. Good pay. Ph. 426-4343. x13

FOR SALE — 3,000-watt Wards generator, \$450, or swap for 8 h.p. or 10 h.p. garden tractor of equal value. Ph. 475-7724 after 2 p.m. x14

IMMEDIATE OCCUPANCY — Chelsea schools, \$84,900. Call Weber Homes, Ph. 475-2828 or 475-2857. x13

SAVE BIG! Clean rugs and upholstery with Blue Lustre. Rent electric shampooer, \$2. Chelsea Hardware. x13

DETROIT FREE PRESS — Newspaper delivery. Immediate openings for Chelsea, and Ann Arbor areas. For single copy delivery of Detroit Free Press. Dependable car needed. Commission and car allowance. Early morning hours. Good part-time work. Write Box 514, care of The Chelsea Standard, give me a call at 475-0121. x14

FOR SALE — Electric stove, \$60, lawn mower, \$20, rug, \$10, each. Kitchen chair, \$25, each. Hollywood bed frame, twin bed springs, front-loading washing machine, bar stools, portable washing machine. Ph. 475-9085. x14

FOR SALE — 1978 Pontiac Grand Prix. Many extras. 10,000 miles. \$5,800. Ph. 426-3887. x14

FOR SALE — Rye hay and straw. Ph. 475-8339. 8710 Workman Rd. 17. x14

FOR SALE — 1977 Yamaha TT 500 motorcycle. Ph. 475-1138. x14

HELP WANTED — 40-hr. week, small engine and power equipment service in local shop. Opportunity to train under experienced mechanic. Some related background preferred. Write Box 514, care of The Chelsea Standard, give me a call at 475-1119 after 6 p.m. C. Winans. x14

BY OWNER, CHELSEA — 4-bedroom colonial, large kitchen with built-ins and breakfast room, formal dining room, family room or studio, fireplace, 2,000 sq. ft. of living space, full basement, 2-car attached garage, patio, gas grill, fruit trees, village services, taxes reasonable. Must see to appreciate. Mid 70's. Call 475-9087. x14

IS IT VACANT GARAGE or barn space you have? I am looking for winter storage for a pick-up. Please give me a call at 475-1119 after 6 p.m. C. Winans. x14

FOR SALE — 20' Breezeaway travel trailer, \$2,200 or best offer. May be seen at 525 N. Main, Lot 2, Chelsea. x14

YARD SALE — Mon., Tues., Sept. 18-19, 9 to 3. All kinds of goodies: clothes, shoes, knick-knacks galore, Levis, 6 h.p. riding mower, helmet, radios, clocks, dishes, many items. Some furniture. Children's clothes also. Prices you won't believe. 3255 N. Lima Center Rd., Dexter, Mich., 4th house on left side of road from boat rental, Four Mile Lake. Ph. 475-9368. x40

FOR SALE by owner — 5 acres in Waterloo Rec. Area. Fully insured 3-bedroom house, shaded, with newly enclosed porch, 22'x24' attached garage, small orchard, small barn with pasture, organic garden spot, state land on two sides. \$38,900. Ph. (517) 622-4019. x18

RAIN OR SHINE — Saturdays open at 7 a.m. Tomatoes, peppers, cabbage, beans, onions, potatoes, carrots, variety of winter and summer squash. Baked goods — German pretzels, plus cinnamon rolls, variety of quick breads, whole wheat, white, and French bread, cookies, jams and jellies. Chelsea Farmers Open Air Market. x16

FOR SALE — Frost free side-by-side refrigerator-freezer, excellent condition. Girls 20" bicycle, like new. Ph. 475-9918. x14

LARGE GARAGE SALE — Sept. 15, 9 a.m. to 5 p.m. Collectibles, tools, furniture, clothes, canned jars, large claw foot bath tub, buck saws, books, much more. Take 16-32 south 4 miles to Grass Lake Rd., right to 1955S. x14

PAINTING and end-of-season reupholstering, interior and exterior, large or small. Ph. 475-1503. x12

NEED A HOME? Christian lady wanted to stay with elderly mother in Stockbridge. Good pay. Ph. 426-4343. x13

FOR SALE — 3,000-watt Wards generator, \$450, or swap for 8 h.p. or 10 h.p. garden tractor of equal value. Ph. 475-7724 after 2 p.m. x14

IMMEDIATE OCCUPANCY — Chelsea schools, \$84,900. Call Weber Homes, Ph. 475-2828 or 475-2857. x13

SAVE BIG! Clean rugs and upholstery with Blue Lustre. Rent electric shampooer, \$2. Chelsea Hardware. x13

DETROIT FREE PRESS — Newspaper delivery. Immediate openings for Chelsea, and Ann Arbor areas. For single copy delivery of Detroit Free Press. Dependable car needed. Commission and car allowance. Early morning hours. Good part-time work. Write Box 514, care of The Chelsea Standard, give me a call at 475-0121. x14

FOR SALE — Electric stove, \$60, lawn mower, \$20, rug, \$10, each. Kitchen chair, \$25, each. Hollywood bed frame, twin bed springs, front-loading washing machine, bar stools, portable washing machine. Ph. 475-9085. x14

FOR SALE — 1978 Pontiac Grand Prix. Many extras. 10,000 miles. \$5,800. Ph. 426-3887. x14

FOR SALE — Rye hay and straw. Ph. 475-8339. 8710 Workman Rd. 17. x1

BOWLING

Seven Point Mixed

Standings as of Sept. 5	W	L
Team No. 3	12	2
Lucky Strikes	10	4
G & L	13	8
K & Four C's	9	12
Streakers	6	15
Miller High Life	6	15
425 and over series: S. Steele, 432; K. Clark, 428.		
140 and over games: S. Steele, 176; K. Green, 146, 142; K. Clark, 184; C. Fleischmann, 144; C. Colvin, 146; C. Collins, 147; C. Marshall, 145; J. Sweet, 155; J. Proctor, 149; D. Roberts, 157, 155; B. Cobb, 153.		

Senior House League

Standings as of Sept. 11	W	L
Chelsea Grinding	7	0
Captain's Table	7	0
Schneider's Grocery	7	0
Bauer Builders	5	2
Walt's Barber Shop	5	2
McCall's Feeds	5	2
K. of C.	5	2
Kilbreath Trucking	5	2
Steele's Heating	4	3
Wolverine Bar	3	4
Central Fibre	2	5
S. J. Custom	2	5
Village Motors	2	5
Frank Groh's Chev.	2	5
Washburn Engineering	2	5
Danahy	0	7
WFW	0	7
Chelsea Grinders	0	7
525 and over series: R. Harris, 551; R. Bauer, 554; Hawker, 561; J. Harok, 565; M. Poertner, 542; F. Modzejewski, 533; G. Burnett, 541; J. Nicola, 537; W. Beaman, 548; J. Torrice, 531; P. Kelly, 547; G. Biggs, 528; B. Ervin, 538; B. Stacy, 590.		

Bulldogs Mixed

Standings as of Sept. 7	W	L
Types Bar & Grill	6	2
Spadafore's	5	3
Smith Service	5	3
Goofers	5	3
Richardson Asphalt	5	3
D. D. DeBurring	3	5
Norm's Sales	3	5
Dottie-O-Dairy	0	8
Men's high games, 175 and over: L. Nix, 207; T. Stafford, 178, 183, 212, 218; D. George, 176, 187, 201; D. Bush, 182; G. Burkhardt, 179; B. Smith, 190, 178.		

Chelsea Women's Bowling Club

Standings as of Sept. 6	W	L
Washburn Engineering	3	1
Parish Cleaners	3	1
DD DeBurring	3	1
Palmer Ford	3	1
Helen Rex's	2 1/2	1 1/2
Jiffy Mixes	2	2
Chelsea Milling	2	2
Heller Electric	2	2
Palmer Leasing	2	2
Klink Excavating	2	2
Good Time Girls	2	2
Laura's Beauty Salon	1 1/2	2 1/2
Wolverine Bar	3	1
Alley Cats	1	3
Freeman Machine	1	3
Norris Electric	1	3
500 series and over: M. Fahrner, 561; P. Poertner, 550; N. Packard, 517; D. Fouty, 524.		

Chelsea Lanes Mixed

Standings as of Sept. 8	W	L
Accra Gauge	7	0
Schauer	5	2
Fireballs	5	2
Ann Arbor Centerless	5	2
Ken's Glass	5	2
McGibney	5	2
Hawley Truck Repair	2	5
Fox Point Flashes	2	5
FW	2	5
Federal Screw Outlaws	2	5
Houle	2	5
Wire & Fire	0	7
King Pins	0	0
Weston	0	0
Women, series of 425 and over: J. Norris, 454; S. Wohlgemuth, 482; D. Keizer, 453; M. Schauer, 426.		

Men, series of 475 and over: J. Torrice, 512; P. McGibney, 538; R. Clark, 502; F. White, 505; R. Zatorski, 559; W. Morley, 502.

Women, 150 games and over: J. Norris, 178, 158; E. Finfrack, 162; S. Wohlgemuth, 191, 187; L. Behnke, 158; D. Keizer, 156, 157; M. Schauer, 164.

Men, 175 games and over: J. Torrice, 206; B. McGibney, 180, 208; R. Clark, 191; W. Morley, 178; F. White, 209; R. Zatorski, 206, 184; E. Sherry, 183; B. Pieske, 189; A. Hawley, 177.

Junior House Girls

Standings as of Sept. 7	W	L
W. C. Klep	7	1
Team No. 4	6	2
Manchester Car Wash	5	3
Cliff's Ace Hardware	4	4
Wolverine Lounge	3 1/2	4 1/2
Coolman Parking	3	5
Kozy Kitchen	3	5
K & W Equipment	2 1/2	5 1/2
Chelsea Lanes	1	7
Drake's	1	3
Series, 425 and over: V. Wurster, 458; J. Cyers, 479; C. Powell, 461.		

Games, 140 and over: K. Stautz, 182; P. Elliott, 155; P. Devulder, 146; S. Ratzlaff, 144, 153; C. Powell, 145, 182; M. Gardner, 162; O. Kouba, 170; J. Cyers, 164, 164, 151; T. Sindlinger, 140; R. McEwan, 158; K. Kessler, 149; V. Wurster, 150, 145, 163; C. Ambs, 145.

Need Women Bowlers

on CWBC League

at 9:00 p.m. Wednesdays

5 women per team

Need couples or teams for Mixed League bowling every other Sunday, 5:45 p.m. shift and 8:00 p.m. shift; also for Friday on 6:50 p.m. shift or 9:00 p.m. shift.

Need couples or teams for Mixed League bowling every other Sunday, 5:45 p.m. shift and 8:00 p.m. shift; also for Friday on 6:50 p.m. shift or 9:00 p.m. shift.

Need couples or teams for Mixed League bowling every other Sunday, 5:45 p.m. shift and 8:00 p.m. shift; also for Friday on 6:50 p.m. shift or 9:00 p.m. shift.

Need couples or teams for Mixed League bowling every other Sunday, 5:45 p.m. shift and 8:00 p.m. shift; also for Friday on 6:50 p.m. shift or 9:00 p.m. shift.

Need couples or teams for Mixed League bowling every other Sunday, 5:45 p.m. shift and 8:00 p.m. shift; also for Friday on 6:50 p.m. shift or 9:00 p.m. shift.

Need couples or teams for Mixed League bowling every other Sunday, 5:45 p.m. shift and 8:00 p.m. shift; also for Friday on 6:50 p.m. shift or 9:00 p.m. shift.

Need couples or teams for Mixed League bowling every other Sunday, 5:45 p.m. shift and 8:00 p.m. shift; also for Friday on 6:50 p.m. shift or 9:00 p.m. shift.

Need couples or teams for Mixed League bowling every other Sunday, 5:45 p.m. shift and 8:00 p.m. shift; also for Friday on 6:50 p.m. shift or 9:00 p.m. shift.

Need couples or teams for Mixed League bowling every other Sunday, 5:45 p.m. shift and 8:00 p.m. shift; also for Friday on 6:50 p.m. shift or 9:00 p.m. shift.

Need couples or teams for Mixed League bowling every other Sunday, 5:45 p.m. shift and 8:00 p.m. shift; also for Friday on 6:50 p.m. shift or 9:00 p.m. shift.

Need couples or teams for Mixed League bowling every other Sunday, 5:45 p.m. shift and 8:00 p.m. shift; also for Friday on 6:50 p.m. shift or 9:00 p.m. shift.

Need couples or teams for Mixed League bowling every other Sunday, 5:45 p.m. shift and 8:00 p.m. shift; also for Friday on 6:50 p.m. shift or 9:00 p.m. shift.

Need couples or teams for Mixed League bowling every other Sunday, 5:45 p.m. shift and 8:00 p.m. shift; also for Friday on 6:50 p.m. shift or 9:00 p.m. shift.

Need couples or teams for Mixed League bowling every other Sunday, 5:45 p.m. shift and 8:00 p.m. shift; also for Friday on 6:50 p.m. shift or 9:00 p.m. shift.

Need couples or teams for Mixed League bowling every other Sunday, 5:45 p.m. shift and 8:00 p.m. shift; also for Friday on 6:50 p.m. shift or 9:00 p.m. shift.

Need couples or teams for Mixed League bowling every other Sunday, 5:45 p.m. shift and 8:00 p.m. shift; also for Friday on 6:50 p.m. shift or 9:00 p.m. shift.

Need couples or teams for Mixed League bowling every other Sunday, 5:45 p.m. shift and 8:00 p.m. shift; also for Friday on 6:50 p.m. shift or 9:00 p.m. shift.

Need couples or teams for Mixed League bowling every other Sunday, 5:45 p.m. shift and 8:00 p.m. shift; also for Friday on 6:50 p.m. shift or 9:00 p.m. shift.

Need couples or teams for Mixed League bowling every other Sunday, 5:45 p.m. shift and 8:00 p.m. shift; also for Friday on 6:50 p.m. shift or 9:00 p.m. shift.

Need couples or teams for Mixed League bowling every other Sunday, 5:45 p.m. shift and 8:00 p.m. shift; also for Friday on 6:50 p.m. shift or 9:00 p.m. shift.

Need couples or teams for Mixed League bowling every other Sunday, 5:45 p.m. shift and 8:00 p.m. shift; also for Friday on 6:50 p.m. shift or 9:00 p.m. shift.

Unknowns League

Standings as of Sept. 6	W	L
Team No. 3	12	2
Lucky Strikes	10	4
G & L	13	8
K & Four C's	9	12
Streakers	6	15
Miller High Life	6	15
425 and over series: S. Steele, 432; K. Clark, 428.		
140 and over games: S. Steele, 176; K. Green, 146, 142; K. Clark, 184; C. Fleischmann, 144; C. Colvin, 146; C. Collins, 147; C. Marshall, 145; J. Sweet, 155; J. Proctor, 149; D. Roberts, 157, 155; B. Cobb, 153.		

Senior House League

Standings as of Sept. 11	W	L
Chelsea Grinding	7	0
Captain's Table	7	0
Schneider's Grocery	7	0
Bauer Builders	5	2
Walt's Barber Shop	5	2
McCall's Feeds	5	2
K. of C.	5	2
Kilbreath Trucking	5	2
Steele's Heating	4	3
Wolverine Bar	3	4
Central Fibre	2	5
S. J. Custom	2	5
Village Motors	2	5
Frank Groh's Chev.	2	5
Washburn Engineering	2	5
Danahy	0	7
WFW	0	7
Chelsea Grinders	0	7
525 and over series: R. Harris, 551; R. Bauer, 554; Hawker, 561; J. Harok, 565; M. Poertner, 542; F. Modzejewski, 533; G. Burnett, 541; J. Nicola, 537; W. Beaman, 548; J. Torrice, 531; P. Kelly, 547; G. Biggs, 528; B. Ervin, 538; B. Stacy, 590.		

Bulldogs Mixed

Standings as of Sept. 7	W	L
Types Bar & Grill	6	2
Spadafore's	5	3
Smith Service	5	3
Goofers	5	3
Richardson Asphalt	5	3
D. D. DeBurring	3	5
Norm's Sales	3	5
Dottie-O-Dairy	0	8
Men's high games, 175 and over: L. Nix, 207; T. Stafford, 178, 183, 212, 218; D. George, 176, 187, 201; D. Bush, 182; G. Burkhardt, 179; B. Smith, 190, 178.		

Chelsea Women's Bowling Club

Standings as of Sept. 6	W	L
Washburn Engineering	3	1
Parish Cleaners	3	1
DD DeBurring	3	1
Palmer Ford	3	1
Helen Rex's	2 1/2	1 1/2
Jiffy Mixes	2	2
Chelsea Milling	2	2
Heller Electric	2	2
Palmer Leasing	2	2
Klink Excavating	2	2
Good Time Girls	2	2
Laura's Beauty Salon	1 1/2	2 1/2
Wolverine Bar	3	1
Alley Cats	1	3
Freeman Machine	1	3
Norris Electric	1	3
500 series and over: M. Fahrner, 561; P. Poertner, 550; N. Packard, 517; D. Fouty, 524.		

Chelsea Lanes Mixed

Standings as of Sept. 8	W	L
Accra Gauge	7	0
Schauer	5	2
Fireballs	5	2
Ann Arbor Centerless	5	2
Ken's Glass	5	2
McGibney	5	2
Hawley Truck Repair	2	5
Fox Point Flashes	2	5
FW	2	5
Federal Screw Outlaws	2	5
Houle	2	5
Wire & Fire	0	7
King Pins	0	0
Weston	0	0
Women, series of 425 and over: J. Norris, 454; S. Wohlgemuth, 482; D. Keizer, 453; M. Schauer, 426.		

Men, series of 475 and over: J. Torrice, 512; P. McGibney, 538; R. Clark, 502; F. White, 505; R. Zatorski, 559; W. Morley, 502.

Women, 150 games and over: J. Norris, 178, 158; E. Finfrack, 162; S. Wohlgemuth, 191, 187; L. Behnke, 158; D. Keizer, 156, 157; M. Schauer, 164.

Men, 175 games and over: J. Torrice, 206; B. McGibney, 180, 208; R. Clark, 191; W. Morley, 178; F. White, 209; R. Zatorski, 206, 184; E. Sherry, 183; B. Pieske, 189; A. Hawley, 177.

Junior House Girls

Standings as of Sept. 7	W	L
W. C. Klep	7	1
Team No. 4	6	2
Manchester Car Wash	5	3
Cliff's Ace Hardware	4	4
Wolverine Lounge	3 1/2	4 1/2
Coolman Parking	3	5
Kozy Kitchen	3	5
K & W Equipment	2 1/2	5 1/2
Chelsea Lanes	1	7
Drake's	1	3
Series, 425 and over: V. Wurster, 458; J. Cyers, 479; C. Powell, 461.		

Games, 140 and over: K. Stautz, 182; P. Elliott, 155; P. Devulder, 146; S. Ratzlaff, 144, 153; C. Powell, 145, 182; M. Gardner, 162; O. Kouba, 170; J. Cyers, 164, 164, 151; T. Sindlinger, 140; R. McEwan, 158; K. Kessler, 149; V. Wurster, 150, 145, 163; C. Ambs, 145.

Need Women Bowlers

on CWBC League

at 9:00 p.m. Wednesdays

5 women per team

Need couples or teams for Mixed League bowling every other Sunday, 5:45 p.m. shift and 8:00 p.m. shift; also for Friday on 6:50 p.m. shift or 9:00 p.m. shift.

Need couples or teams for Mixed League bowling every other Sunday, 5:45 p.m. shift and 8:00 p.m. shift; also for Friday on 6:50 p.m. shift or 9:00 p.m. shift.

Need couples or teams for Mixed League bowling every other Sunday, 5:45 p.m. shift and 8:00 p.m. shift; also for Friday on 6:50 p.m. shift or 9:00 p.m. shift.

Need couples or teams for Mixed League bowling every other Sunday, 5:45 p.m. shift and 8:00 p.m. shift; also for Friday on 6:50 p.m. shift or 9:00 p.m. shift.

Need couples or teams for Mixed League bowling every other Sunday, 5:45 p.m. shift and 8:00 p.m. shift; also for Friday on 6:50 p.m. shift or 9:00 p.m. shift.

Need couples or teams for Mixed League bowling every other Sunday, 5:45 p.m. shift and 8:00 p.m. shift; also for Friday on 6:50 p.m. shift or 9:00 p.m. shift.

Need couples or teams for Mixed League bowling every other Sunday, 5:45 p.m. shift and 8:00 p.m. shift; also for Friday on 6:50 p.m. shift or 9:00 p.m. shift.

Need couples or teams for Mixed League bowling every other Sunday, 5:45 p.m. shift and 8:00 p.m. shift; also for Friday on 6:50 p.m. shift or 9:00 p.m. shift.

Need couples or teams for Mixed League bowling every other Sunday, 5:45 p.m. shift and 8:00 p.m. shift; also for Friday on 6:50 p.m. shift or 9:00 p.m. shift.

Need couples or teams for Mixed League bowling every other Sunday, 5:45 p.m. shift and 8:00 p.m. shift; also for Friday on 6:50 p.m. shift or 9:00 p.m. shift.

Need couples or teams for Mixed League bowling every other Sunday, 5:45 p.m. shift and 8:00 p.m. shift; also for Friday on 6:50 p.m. shift or 9:00 p.m. shift.

Need couples or teams for Mixed League bowling every other Sunday, 5:45 p.m. shift and 8:00 p.m. shift; also for Friday on 6:50 p.m. shift or 9:00 p.m. shift.

Need couples or teams for Mixed League bowling every other Sunday, 5:45 p.m. shift and 8:00 p.m. shift; also for Friday on 6:50 p.m. shift or 9:00 p.m. shift.

Need couples or teams for Mixed League bowling every other Sunday, 5:45 p.m. shift and 8:00 p.m. shift; also for Friday on 6:50 p.m. shift or 9:00 p.m. shift.

Need couples or teams for Mixed League bowling every other Sunday, 5:45 p.m. shift and 8:00 p.m. shift; also for Friday on 6:50 p.m. shift or 9:00 p.m. shift.

Need couples or teams for Mixed League bowling every other Sunday, 5:45 p.m. shift and 8:00 p.m. shift; also for Friday on 6:50 p.m. shift or 9:00 p.m. shift.

Need couples or teams for Mixed League bowling every other Sunday, 5:45 p.m. shift and 8:00 p.m. shift; also for Friday on 6:50 p.m. shift or 9:00 p.m. shift.

Need couples or teams for Mixed League bowling every other Sunday, 5:45 p.m. shift and 8:00 p.m. shift; also for Friday on 6:50 p.m. shift or 9:00 p.m. shift.

Need couples or teams for Mixed League bowling every other Sunday, 5:45 p.m. shift and 8:00 p.m. shift; also for Friday on 6:50 p.m. shift or 9:00 p.m. shift.

Need couples or teams for Mixed League bowling every other Sunday, 5:45 p.m. shift and 8:00 p.m. shift; also for Friday on 6:50 p.m. shift or 9:00 p.m. shift.

Need couples or teams for Mixed League bowling every other Sunday, 5:45 p.m. shift and 8:00 p.m. shift; also for Friday on 6:50 p.m. shift or 9:00 p.m. shift.

District Court Proceedings

Week of Sept. 1-7

James David Muhme was found guilty of impaired driving. Fines and costs, \$250. He was referred to the Alcohol Safety Action Program.

Ernest G. Norton was found guilty of driving under the influence of liquor. Fines and costs, \$250. He was given six months probation, referred to the Alcohol Safety Action Program, and ordered to pay restitution for damages.

Richard D. Packett was found guilty of driving with a suspended license. Fines and costs, \$75. He was sentenced to three days in jail or 30 days without the fine.

John D. Halser pled guilty to driving with a suspended license. Fines and costs, \$75. He was sentenced to three days in jail or 30 days in jail without the fine with credit for time already spent.

William Russell Hines was found guilty of disturbing the peace. Fines and costs, \$25.

Jon Francis Estes was found guilty of driving with a suspended license. Fines and costs, \$75. He was sentenced to three days in jail or 30 days without the fine.

Mark R. Leutheusser pled guilty to speeding while appearing on a bench warrant. Fines and costs, \$41.

Frances Frank pled guilty to possession of open intoxicants. Fines and costs, \$50.

Ronald G. Facik



FISHER

The Sound Choice For Sound Values!!!

We Now Have A Complete Stock of Fine Quality Fisher Component Systems



ICS 407

FISHER - AVO10 COMPONENT SYSTEM

- ★ AM/FM Stereo Receiver
- ★ Cassette Tape Recorder/Player with Dolby Noise Reduction
- ★ 13 Watts/Channel
- ★ Built-in Automatic Record Changer with Magnetic Cartridge, Base Dust Cover
- ★ Full Range Airdyne Speakers 6 1/2" Full range 1 8" passive radiator

Total suggested retail if components are purchased separately, \$649.80

Our Price Only **\$379⁹⁵**



ACS 1733

For the Finest in Stereo Sound,
This System Includes . . .

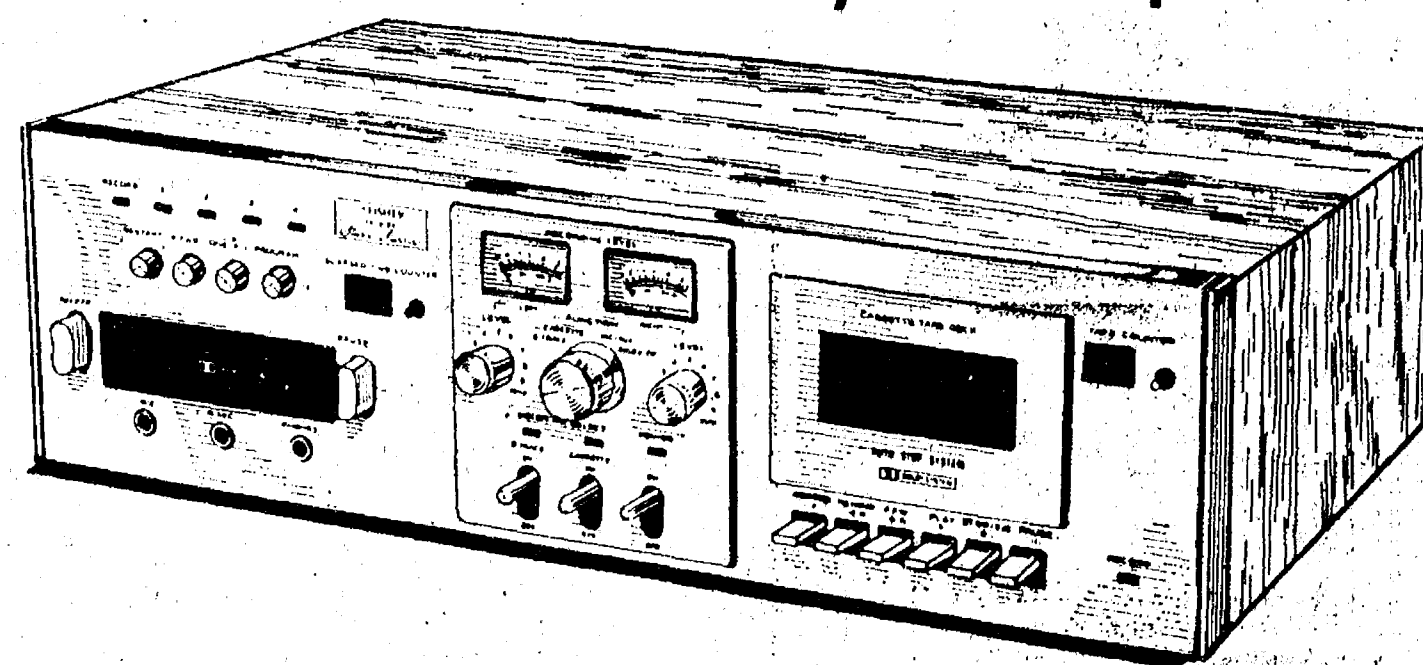
- ★ AM/FM Stereo Receiver with Graphic Equalizer, 45 Watts per Channel
- ★ Linear Motor Direct Drive Turntable with Magnetic Cartridge, Base and Dust Cover
- ★ 3-Way Ported Speaker Systems 12" woofer, 5" midrange, 3" tweeter

SAVE \$359.85

Our Price Only **\$749⁹⁵**

If Purchased Separately \$1,109.80

The NEW Fisher Dual Dolby Double Tape Deck



ER 8150

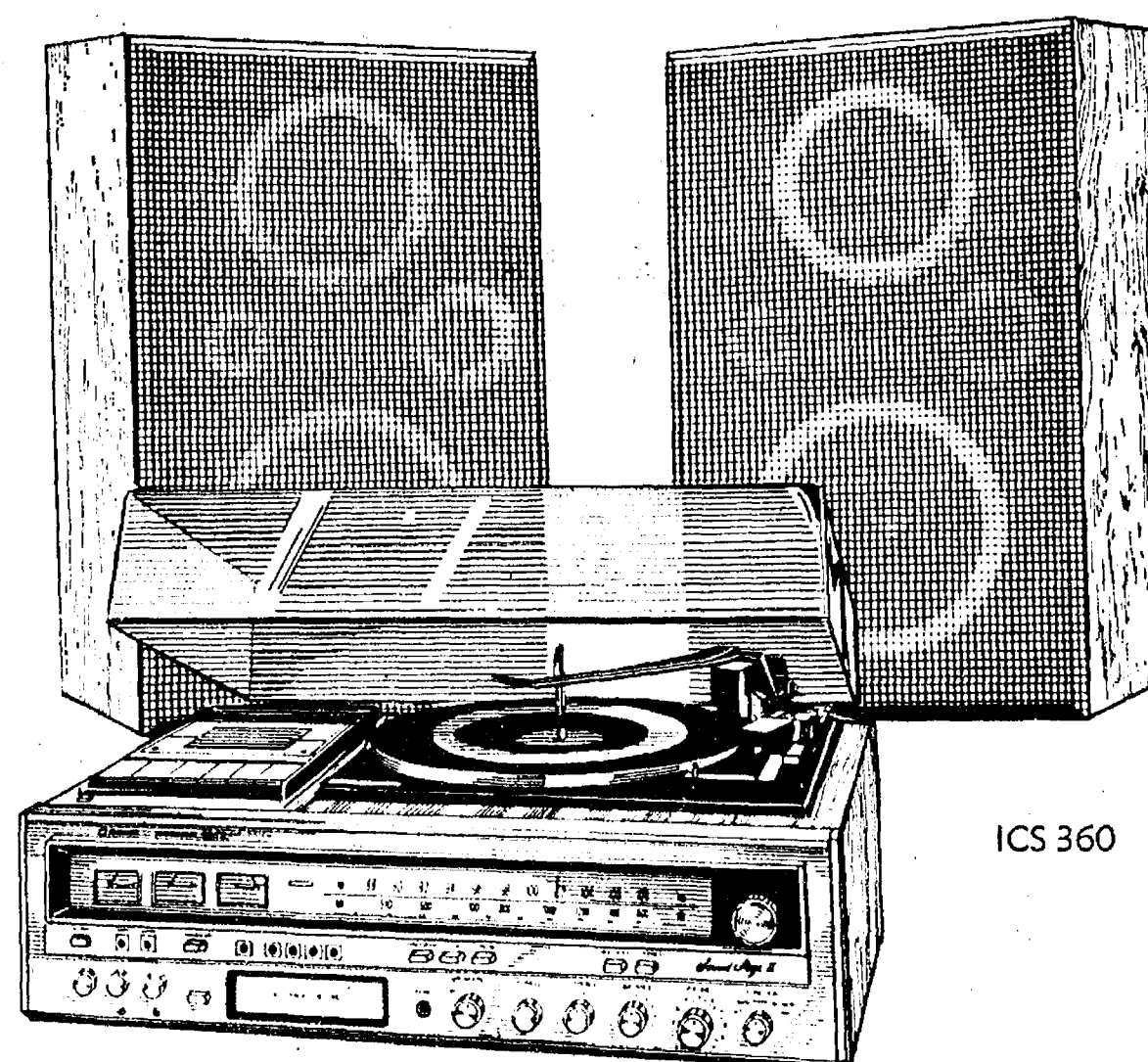
Record high fidelity 8 track and cassette stereo tapes with this high performance component.

- ★ Front Load
- ★ Dolby Noise Reduction
- ★ Dual Recording System
- ★ Dolby FM Circuitry
- ★ Two Calibrated V.U. Meters

Reg. \$349.95

\$299⁹⁵

Our Price Only



ICS 360

This One's
Got It All!

- ★ AM/FM Stereo Receiver
- ★ Automatic Record Changer
- ★ Dolby Cassette Player and Recorder
- ★ 8-Track Player and Recorder
- ★ 15 Watts per Channel
- ★ 3-Way Airdyne Speakers

If Purchased Separately \$719.85

Our Price Only

\$529⁹⁵

Five different models of tape decks in stock to complete any component system, including Fisher's Wireless Remote Control Cassette Recorder with Dolby



CD 4025

Reg. \$249.95

Our Price Only

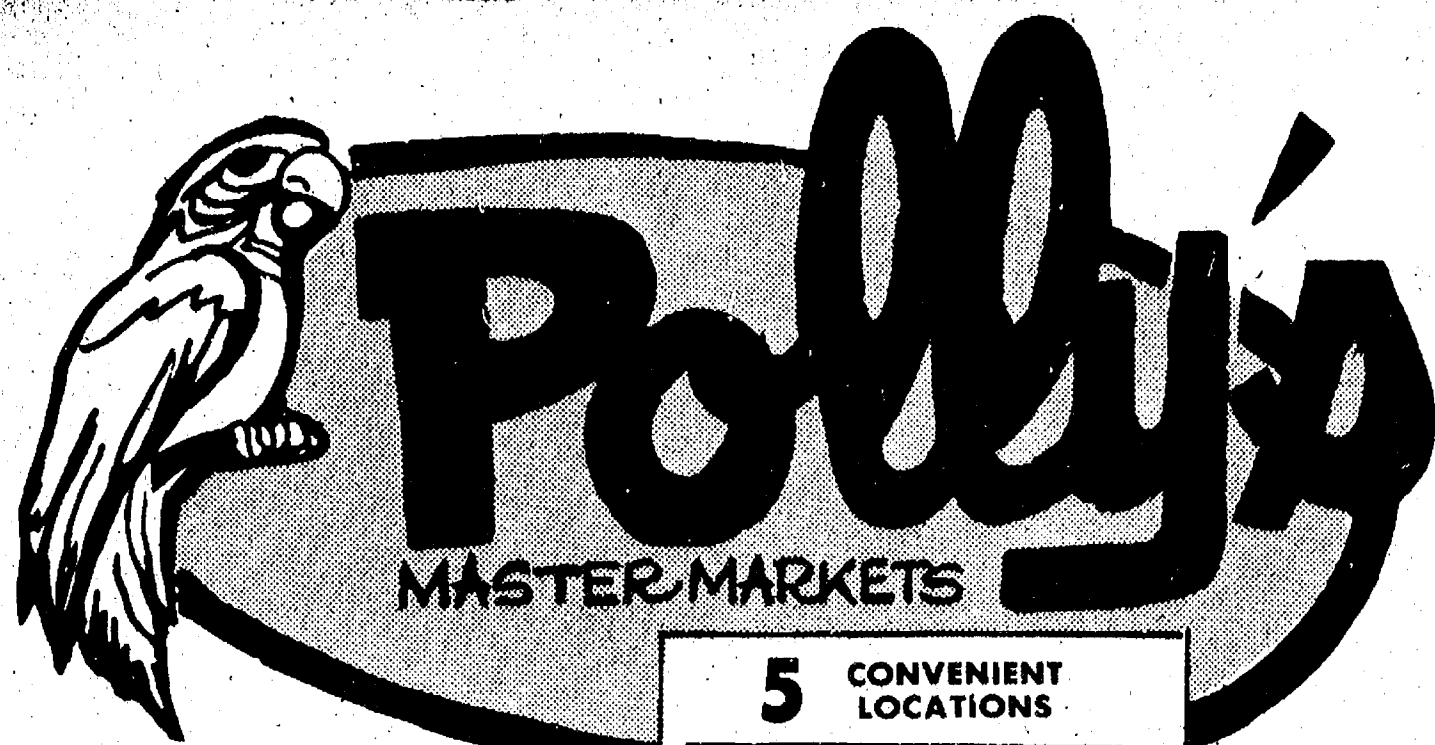
\$229⁹⁵

STOP IN TO SEE OUR NEW LINE

HEYDLAUFF'S

113 N. Main St., Chelsea

Ph. 475-1221



5 CONVENIENT LOCATIONS

201 PARK AVE. V.L.
1821 SPRING ARBOR RD.
960 NORTH WEST AVE.
1809 EAST MICHIGAN
1101 M-52, CHELSEA



5 CONVENIENT LOCATIONS

201 PARK AVE. V.L.
1821 SPRING ARBOR RD.
960 NORTH WEST AVE.
1809 EAST MICHIGAN
1101 M-52 CHELSEA

get to know us...

WE CAN HELP YOU SAVE ON YOUR FOOD BILL!

**Open Daily 8 to 10
Sunday 9 to 9**

- ★ **QUALITY PRODUCE**
- ★ **QUALITY MEAT**
- ★ **COLD BEER, WINE,**
- ★ **LIQUOR**
- ★ **LOTTERY TICKETS**
- ★ **SIDES OF BEEF**
- ★ **FRUIT BASKETS**
- ★ **DRY CLEANING**
- ★ **PHOTO PROCESSING**
- ★ **VARIETY AT LOW PRICES**



5 CONVENIENT LOCATIONS

201 PARK AVE. V.L.
1821 SPRING ARBOR RD.
960 NORTH WEST AVE.
1809 EAST MICHIGAN
1101 M-52 CHELSEA



5 CONVENIENT LOCATIONS

201 PARK AVE. V.L.
1821 SPRING ARBOR RD.
960 NORTH WEST AVE.
1809 EAST MICHIGAN
1101 M-52 CHELSEA

BUTCHER SHOP

SPECIALS



Polly's
MASTERMARKETS

POLLY'S SPRING ARBOR RD.
OPEN DAILY
7 A.M. TIL 10 P.M.
SUNDAY
8 A.M. TIL 9 P.M.
ALL OTHER POLY'S OPEN
DAILY
8 A.M. TIL 10 P.M.
SUNDAY
9 A.M. TIL 9 P.M.

5 CONVENIENT
LOCATIONS
201 PARK AVE., V.L.
1821 SPRING ARBOR RD.
960 NORTH WEST AVE.
1809 EAST MICHIGAN
1101 M-52 CHELSEA

Choice Beef Boneless
**TOP
ROUND
STEAK**

\$1.49
LB.

SAVE 50%
WITH IN-STORE COUPON

Farmer Peets
RE-PEETER

BACON

\$1.39
LB.

Choice Beef
**ROUND
ROAST**

\$1.39
LB.

HYGRADE'S
ham
WATER ADDED
Boneless
Fully Cooked

Hygrade
BONELESS

HAM
Water Added

\$1.49
LB.

Shaved LB. \$1.59

Choice Beef
**SIRLOIN
TIP STEAK**

\$1.79
lb.

Choice Beef
**SIRLOIN
STEAK**

\$1.89
lb.

Choice Beef
**GROUND
CHUCK**

\$1.19
lb.

Extra Lean
**MEAT
LOAF MIX**

\$1.19
lb.

Thin Sliced
**SANDWICH
STEAKS**

\$1.89
lb.

Choice Beef
**RIB
STEAK**

\$1.89
LB.

Extra Lean
**MIXED
PORK
CHOPS**

\$1.19
LB.

Government
Inspected

**MIXED
FRYER
PARTS**

55¢
LB.

Forest Brook
BACON

99¢
LB.

Farmer Peets
**SMOKED
PICNICS**

Water Added

69¢
LB.

Sliced lb. 79¢

**FRESH
FISH**

FRESH SMELT	LB.	99¢
FRESH COD	LB.	\$1.79
FRESH HADDOCK	LB.	\$1.89
FRESH SOLE	LB.	\$1.99

Steuhower
SIZZLE STEAKS 18 oz. **\$2.29**

Tyson
CORNISH HENS 24 oz. **\$1.59**

Weaver Heat n' Eat
CHICKEN BREAST 22 oz. **\$2.69**

WE HONOR
GREAT SCOTT
CHECK
CASHING CARDS

Farmer Peets
BONELESS

**HAM
SLICES**

\$1.89

Hygrade
MEATLOAF or

**BEEF
FRANKS**

99¢

Hygrade

**SALCED
BOLOGNA**

\$1.49

Harvest of farm fresh

PRODUCE



Homegrown
PRUNE PLUMS

LB. **29¢**

Tasty
CARROTS

2 LB. BAG **39¢**

Sno-White
MUSHROOMS
LB. **99¢**

Crisp
HEAD LETTUCE

2/69¢
for



save 30¢ with in-store coupon
U.S. NO. 1
MICHIGAN

POTATOES

10 LB. BAG

69¢

Buy 2 - Save 60¢ with in-store coupon
ICE CREAM

Half Gallon **89¢**

Buy 2 - Save 58¢ with in-store coupon
Bumble Bee CHUNK LIGHT TUNA

6 1/2 oz. **49¢**



save 21¢ with in-store coupon
JOY DETERGENT

22 oz. **79¢**

save 37¢ with in-store coupon

PAM SPRAY SHORTENING

9 oz. **89¢**

save 24¢ with in-store coupon
EASY-OFF WINDOW CLEANER

18 1/2 oz. **49¢**

save 18¢ with in-store coupon

HUNT'S BIG JOHN BEANS

20 oz. **59¢**

Sunshine
KRISPY SALTINE CRACKERS

2/89¢

save 45¢ with in-store coupon
BLUE BONNET MARGARINE

1 LB. Qtrs. **2/89¢**

save 30¢ with in-store coupon
NABISCO NILLA WAFERS

12 oz. **49¢**

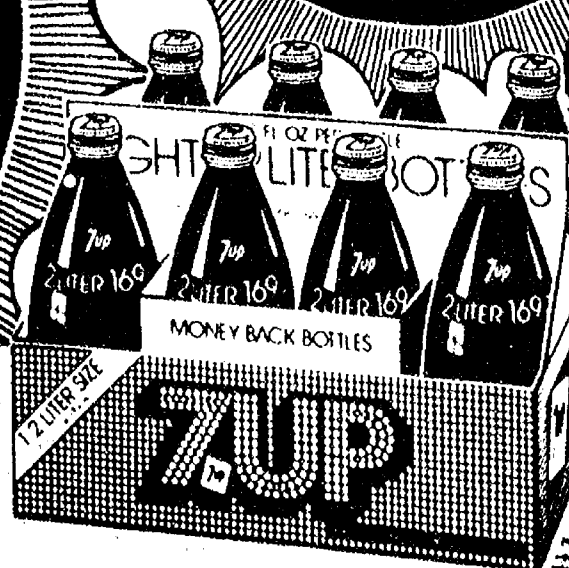
save 50¢ with in-store coupon
FOLGERS COFFEE

2 lb. **\$4.79**

1/2 Liter Size
8 PAK 7-UP CRUSH OR HIRES

Return Bottles **99¢**

Plus Deposit



Borden COTTAGE CHEESE	24 oz.	89¢
Borden CHOCOLATE MILK	Qt.	49¢
Borden French ONION DIP	Pt.	49¢
Borden SUNDAY CONES	6 Pk.	69¢
Aunt Hattie BREAD	2 24 oz.	1.99

Birds Eye ORANGE PLUS	12 oz.	79¢
On-Cor STUFFED CABBAGE	32 oz.	\$1.49
Johns Premium SAUSAGE PIZZA	22 oz.	\$1.49
Sara Lee COFFEE ROUND	2 6 oz.	1.99
Fresh BROWNIES	6 for	59¢

Johnson's TODDLER DIAPERS 12 Cl. **\$1.89**
Jumbo TERI TOWELS **59¢**
50¢ off DASH DETERGENT 211 oz. **\$4.99**
Room Deodorizer WIZARD SOLID 3 6 oz. for **\$1.00**

Richelieu WESTERN DRESSING 32 oz. **\$1.29**
Scot Lad PREPARED MUSTARD 24 oz. **49¢**
Bix Tex Ruby Red GRAPEFRUIT JUICE 46 oz. **49¢**
Holsum ENGLISH MUFFINS 6 Pk. **49¢**

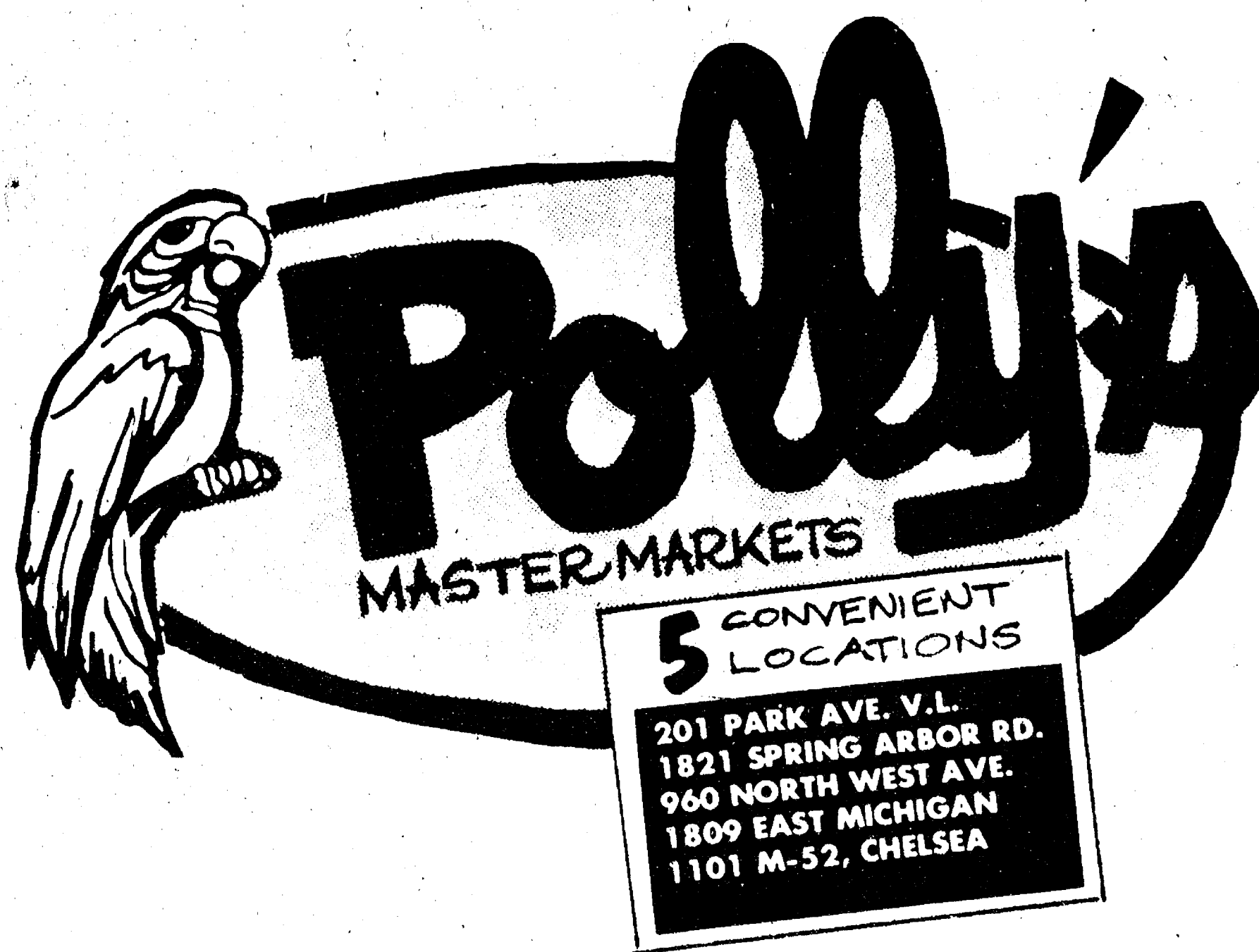


Polly's
MASTERMARKETS

5 CONVENIENT LOCATIONS
201 PARK AVE., V.I.
1821 SPRING ARBOR RD.
960 NORTH WEST AVE.
1809 EAST MICHIGAN
1101 M-52 CHELSEA

Thank You

FOR SHOPPING AT...



WHERE WE ARE
HAPPY TO.....

save YOU MONEY!